

Transportation Planning Division

Northwest Orange County Areawide Transportation Study (NOWOCATS) 1st Community Meeting – Series 1

January 26 & 28, 2026



Presentation Outline

- Welcome and Opening Remarks
- Study Purpose and Objectives
- Existing Conditions Evaluation
- Programmed and Planned Improvements
- Future Conditions Evaluation
- Study Timeline
- Public Engagement



Presentation Outline

- **Welcome and Opening Remarks**
- **Study Purpose and Objectives**
- **Existing Conditions Evaluation**
- **Programmed and Planned Improvements**
- **Future Conditions Evaluation**
- **Study Timeline**
- **Public Engagement**



Welcome and Opening Remarks



Christine Moore
DISTRICT 2 COMMISSIONER



Welcome and Opening Remarks

Meeting Instructions

- The presentation will be followed by a question-and-answer period.
- Comments will be addressed in the order they are received.
- If you received a post card, you are on the project mailing list. If you did not, please sign in and provide your address to be added to the mailing list.

NOWOCATS Northwest Orange County
Areawide Transportation Study


MEETING NOTICE NO. 1 JANUARY 2026

Orange County Mayor Jerry L. Demings and District 2 Commissioner Christine Moore invite you to attend a community meeting for the Northwest Orange County Areawide Transportation Study (NOWOCATS).

What is NOWOCATS?
Orange County, in partnership with the City of Apopka, is undertaking NOWOCATS to proactively develop a transportation system that can support anticipated growth while preserving the unique character of the region. The study will function as a long-range transportation plan, identifying and analyzing potential projects to improve connectivity, reduce congestion, and enhance mobility for all modes of travel – including vehicles, transit, bicycles, and pedestrians.

What are the project limits?
The study limits encompass the region north of Clarcona-Ocoee Road, south of Orange/Seminole County line, east of Orange/Lake County Line and west of Orange/Seminole County line.

Study Area Map



COMMUNITY MEETING SERIES #1

Due to the size of the study area, there will be two opportunities for the public to attend. The same information will be presented at both meetings.

January 26, 2026 6:00-8:00 p.m. Apopka Community Center 519 S Central Avenue Apopka, FL 32703	January 28, 2026 6:00-8:00 p.m. Kelly Park School 4700 Jason Dwyer Parkway Apopka, FL 32712
--	--

The meetings will begin with an open house at 6:00 p.m. to allow participants to view the meeting materials prior to the presentation. The presentation will begin promptly at 6:30 p.m., followed by a public comment period. All meeting materials, including the presentation, will be available prior to the meeting on the project website: www.NOWOCATS.com

What is the intent of this meeting?
The purpose of this first of two meetings is to present the data collection findings for existing traffic conditions and 2050 model traffic forecasts, and to obtain your feedback on transportation issues important to you!

Scan the QR Code on the left to obtain more information about this project and the project contacts.

Escanee el código QR a la izquierda para obtener más información sobre este proyecto y sus contactos.

We strongly encourage public participation and welcome your comments!

Public participation is solicited without regard to race, color, national origin, age, sex, religion, income, disability, or familial status. Persons who require language translation or interpretive services, which are provided at no cost, should contact Orange County Title VI/Nondiscrimination Coordinator Ralpheeta Akai, at 407-838-5828 or ralpheeta.akai@fla.net at least seven (7) days prior to the hearing. Persons requiring special accommodations under the Americans with Disabilities Act of 1990 (ADA) may request assistance from County ADA Coordinator Nicole Norton, at 407-838-6688 or nicole.norton@fla.net at least seven (7) days prior to the hearing.

Date: _____	Speaker Request Card	Number <input type="checkbox"/>
To be completed prior to making a recorded statement		
COMMUNITY MEETING SERIES NO. 1		
January 26, 2026		
Northwest Orange County		
Areawide Transportation Study (NOWOCATS)		
Orange County, Florida		
Please Print:		
Name: _____		
Last First Middle Initial		
Address: _____		
Street		
City State Zip Code		
Telephone: () _____		
Area Code		
Representing: Self _____ Firm _____		
Government Agency _____		
Civic Organization _____		
Homeowners Association _____		
Other _____		



Welcome and Opening Remarks

Orange County Project

Contact:

Hatem A. Abou-Senna, PhD., P.E.

Project Manager

Transportation Planning Division
Orange County Public Works Department
4200 John Young Parkway
Orlando, FL 32839
Email: Hatem.Abou-Senna@ocfl.net
Phone: (407) 836-8023
Fax: (407) 836-8079



Call, Email, or Visit Website
www.NOWOCATS.com



Consultant Project

Contact:

Babuji Ambikapathy, P.E., AICP

VHB

225 E. Robinson Street, Suite 300
Landmark Center Two
Orlando, FL 32801
Email: BAmbikapathy@VHB.com
Phone: (407) 459-1630



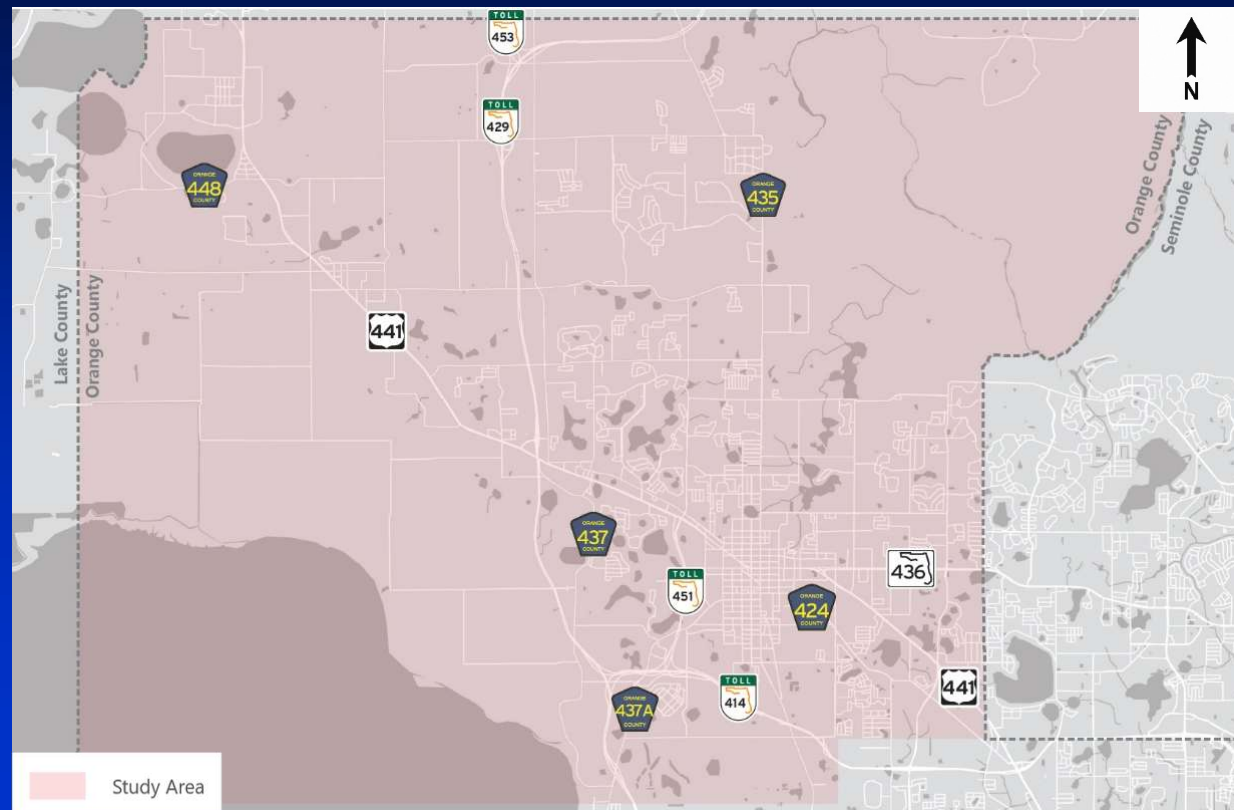
Presentation Outline

- Welcome and Opening Remarks
- **Study Purpose and Objectives**
- Existing Conditions Evaluation
- Programmed and Planned Improvements
- Future Conditions Evaluation
- Study Timeline
- Public Engagement



Study Purpose and Objectives

- Northwest Orange County Areawide Transportation Study (NOWOCATS)
- Identify and prioritize potential transportation projects to support future growth
 - Improve network connectivity
 - Provide relief to constrained corridors
 - Short-term, mid-term, and long-term improvements for all road users

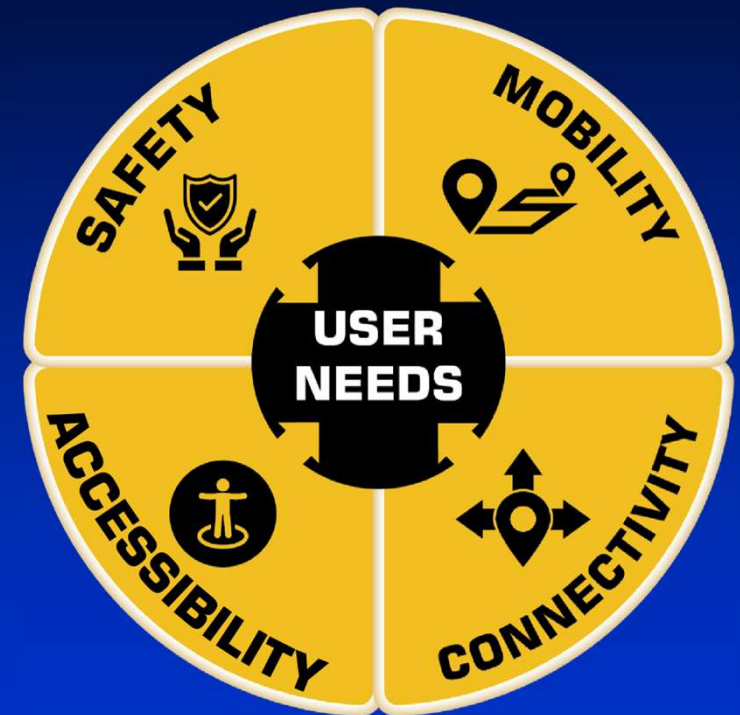




Study Purpose and Objectives

Identify Improvements

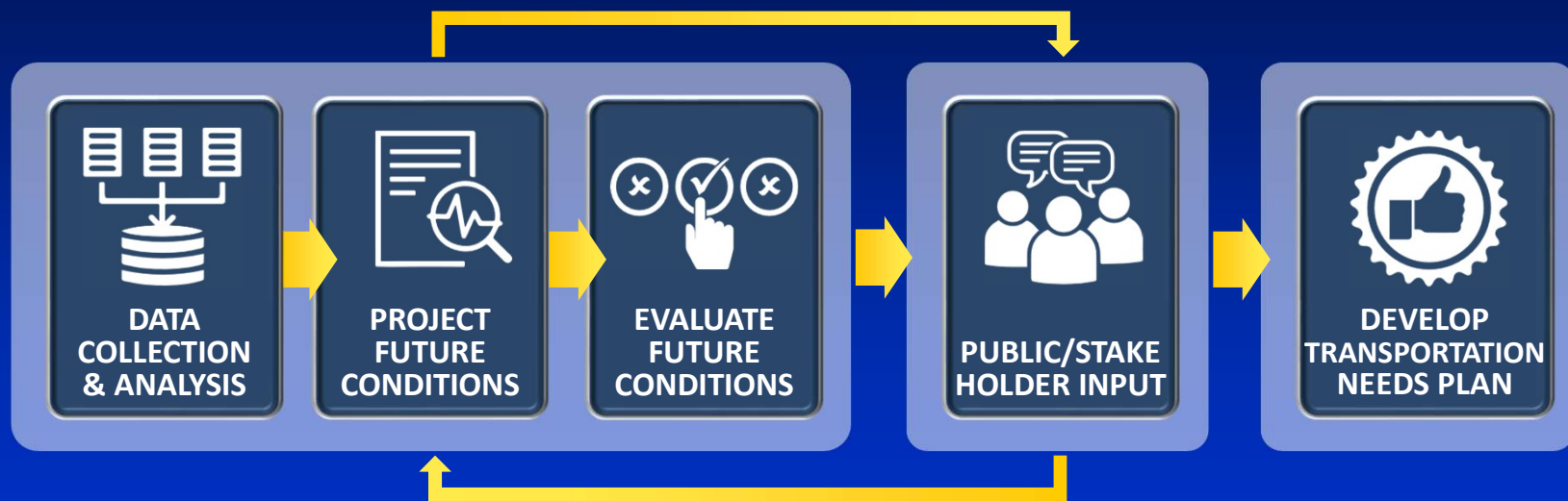
- Document Project Need
- Balance Needs of all users
 - Safety
 - Mobility
 - Connectivity
 - Accessibility





Study Purpose and Objectives

Study Process





Presentation Outline

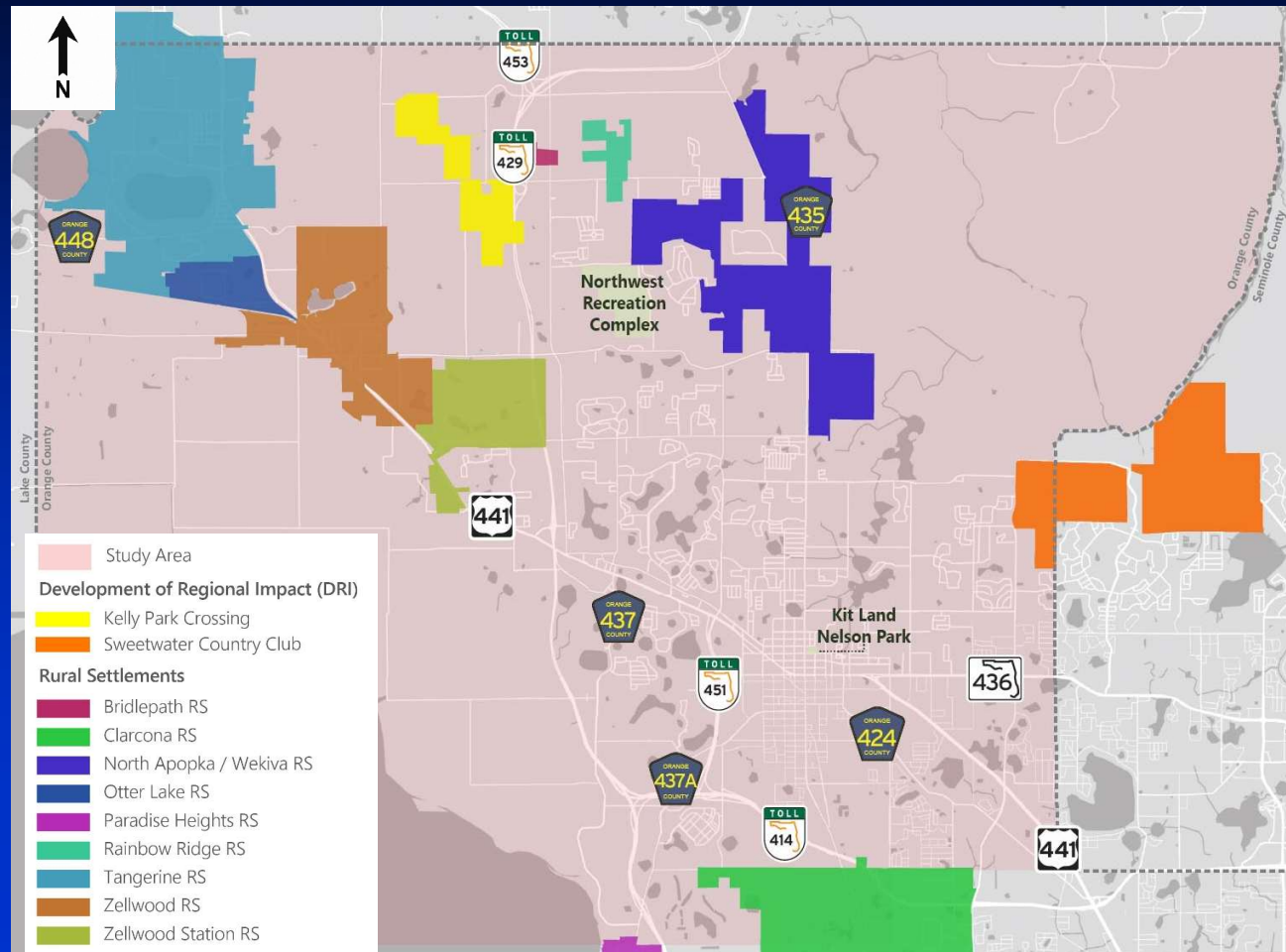
- Welcome and Opening Remarks
- Study Purpose and Objectives
- **Existing Conditions Evaluation**
- Programmed and Planned Improvements
- Future Conditions Evaluation
- Study Timeline
- Public Engagement



Existing Conditions Evaluation

Study Area Overview

- City of Apopka – core urban center
- Three Parks
 - Wekiva Springs State Park
 - Kelly Park
 - Kit Land Nelson Park
- Major Developments
 - Sweetwater Country Club DRI
 - Kelly Park Interchange Form-Based Code Area
- 44 intersections
- 27 roadways



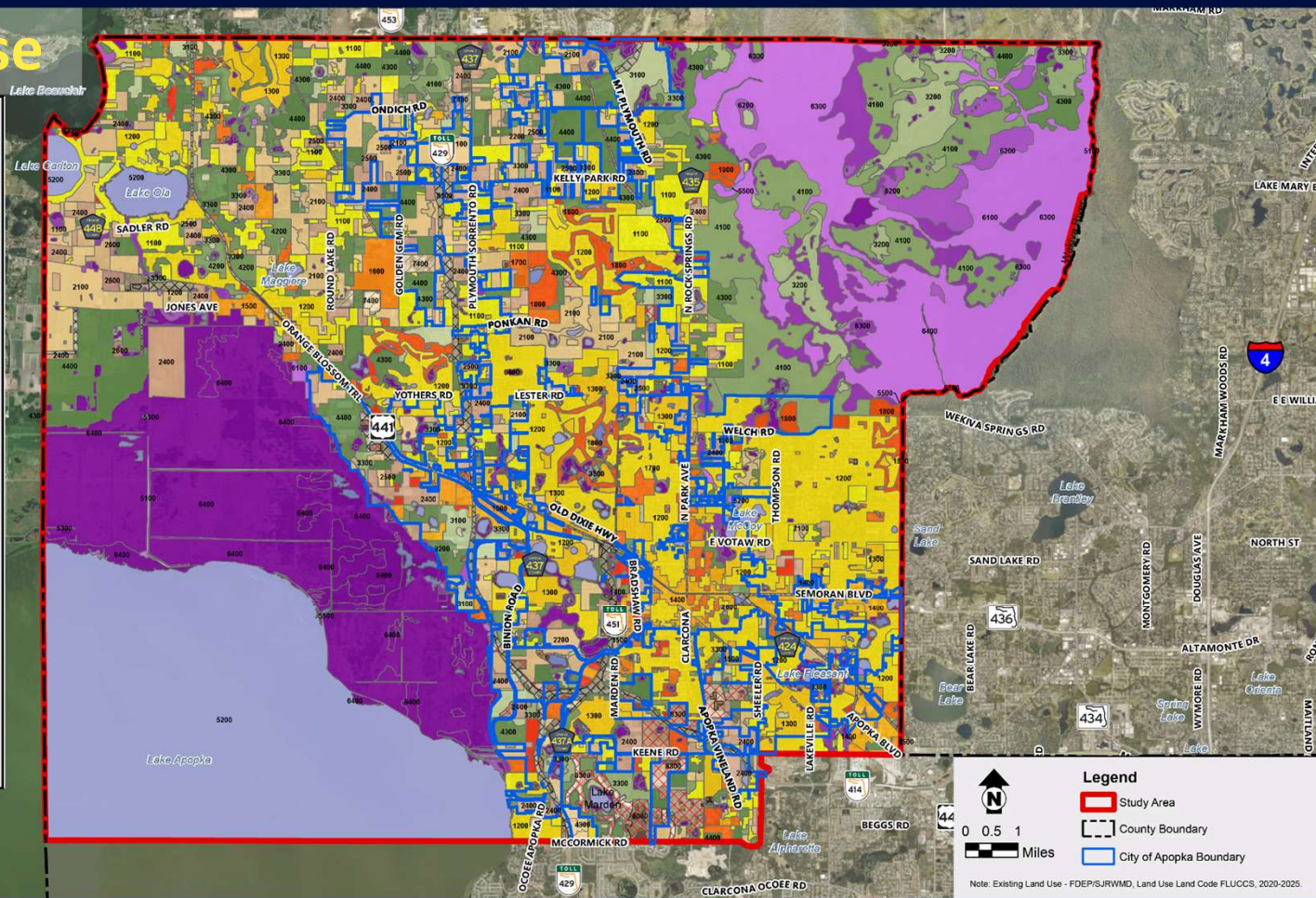


Existing Conditions Evaluation

Existing Land Use

Existing Land Use

- 1100- Residential Low Density
- 1200- Residential Medium Density
- 1300- Residential High Density
- 1400- Commercial and Services
- 1500- Industrial
- 1600- Extractive
- 1700- Institutional
- 1800- Recreational
- 1900- Open Land
- 2100- Cropland and Pastureland
- 2200- Tree Crops
- 2300- Feeding Operations
- 2400- Nurseries and Vineyards
- 2500- Specialty Farms
- 2600- Other Open Lands <Rural>
- 3100- Herbaceous
- 3200- Shrub and Brushland
- 3300- Mixed Rangeland
- 4100- Upland Coniferous Forests
- 4200- Upland Hardwood Forests
- 4300- Upland Mixed Forests
- 4400- Tree Plantations
- 5100- Streams and Waterways
- 5200- Lakes
- 5300- Reservoirs
- 5500- Major Springs
- 6100- Wetland Hardwood Forests
- 6200- Wetland Coniferous Forests
- 6300- Wetland Forested Mixed
- 6400- Vegetated Non-Forested Wetlands
- 7400- Disturbed Lands
- 8100- Transportation
- 8200- Communications
- 8300- Utilities



Legend

- Study Area
- County Boundary
- City of Apopka Boundary

0 0.5 1
Miles

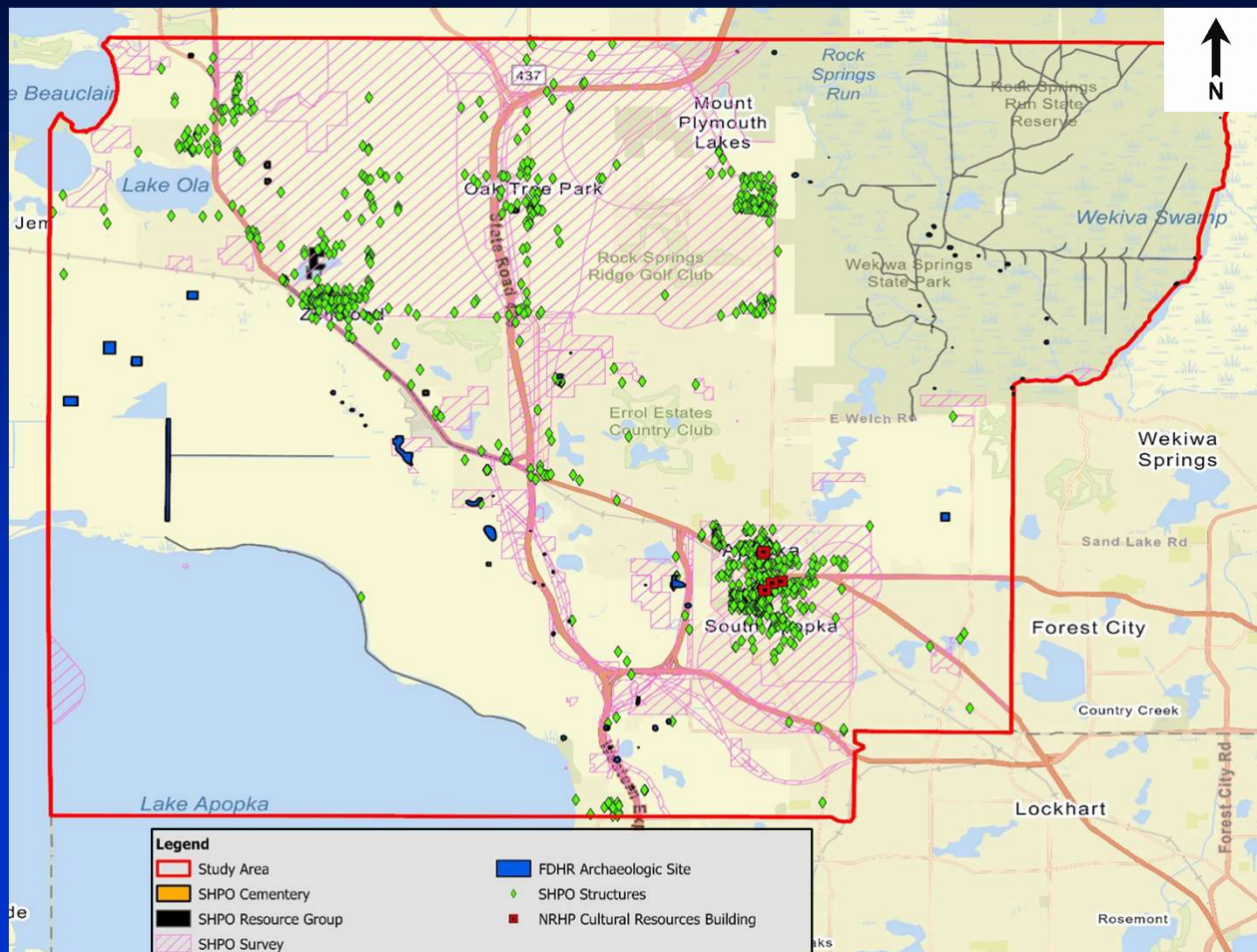
Note: Existing Land Use - FDEP/SJRWMD, Land Use Land Code FLUCCS, 2020-2025.



Existing Conditions Evaluation

Cultural Resources

- Structures – 915
- Bridges – 2
- Resource Groups* - 21
- Five known resources eligible for National Listing





Existing Conditions Evaluation

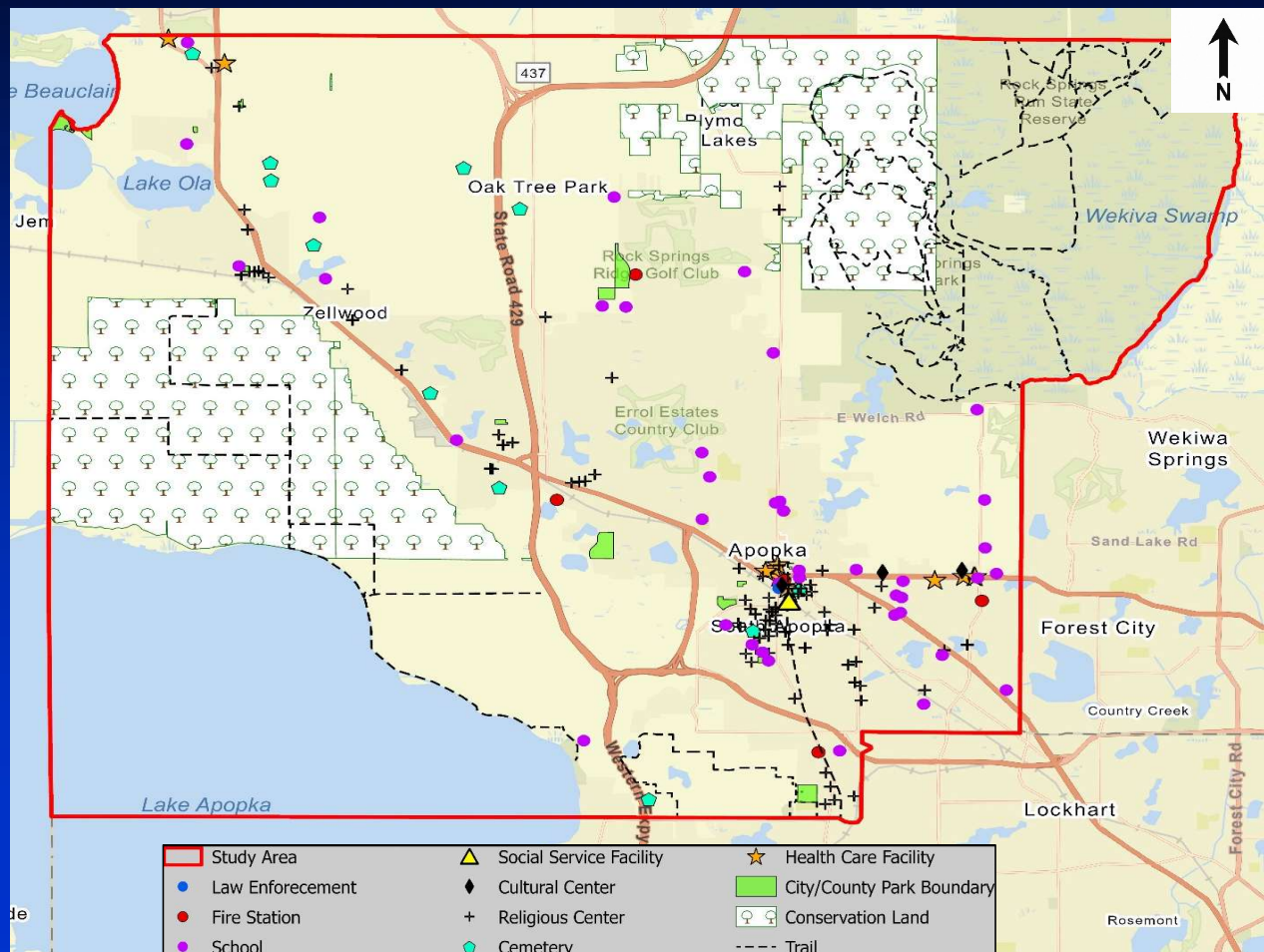
Social Resources

■ Public Facilities

- Police/Fire – 10
- Health Care/Hospital – 32
- Religious Center – 112
- Schools – 39
- Parks/Natural Lands – 26

■ Utility Agency/Owned Lands – 36

■ Conservation/Public Lands – 21





Existing Conditions Evaluation

Natural and Physical Resources

- Potential for protected wildlife species – 54
- Within USFWS Consultation Area for:
 - Everglade Snail Kite
 - Florida Scrub Jay
 - Sand Skink
 - Wood Stork core foraging area for three colonies
- Potential wildlife crossings/habitat connectivity enhancements – 6
- Wetlands – 37,787.75 +/- acres
 - Wekiva River, Tributaries, Lake Apopka North Shore
 - Lakes – Apopka, Bartho, Lerla, Lucie, Carlton, Ola, Prevatt, Alden, Prevatt, McCoy, Upper and Lower Lake Doe, Grassmere, Standish, Page, Pleasant
 - Rock Springs, Rock Springs Run
 - Unnamed systems
- Contamination (potential for/known) – 1,787

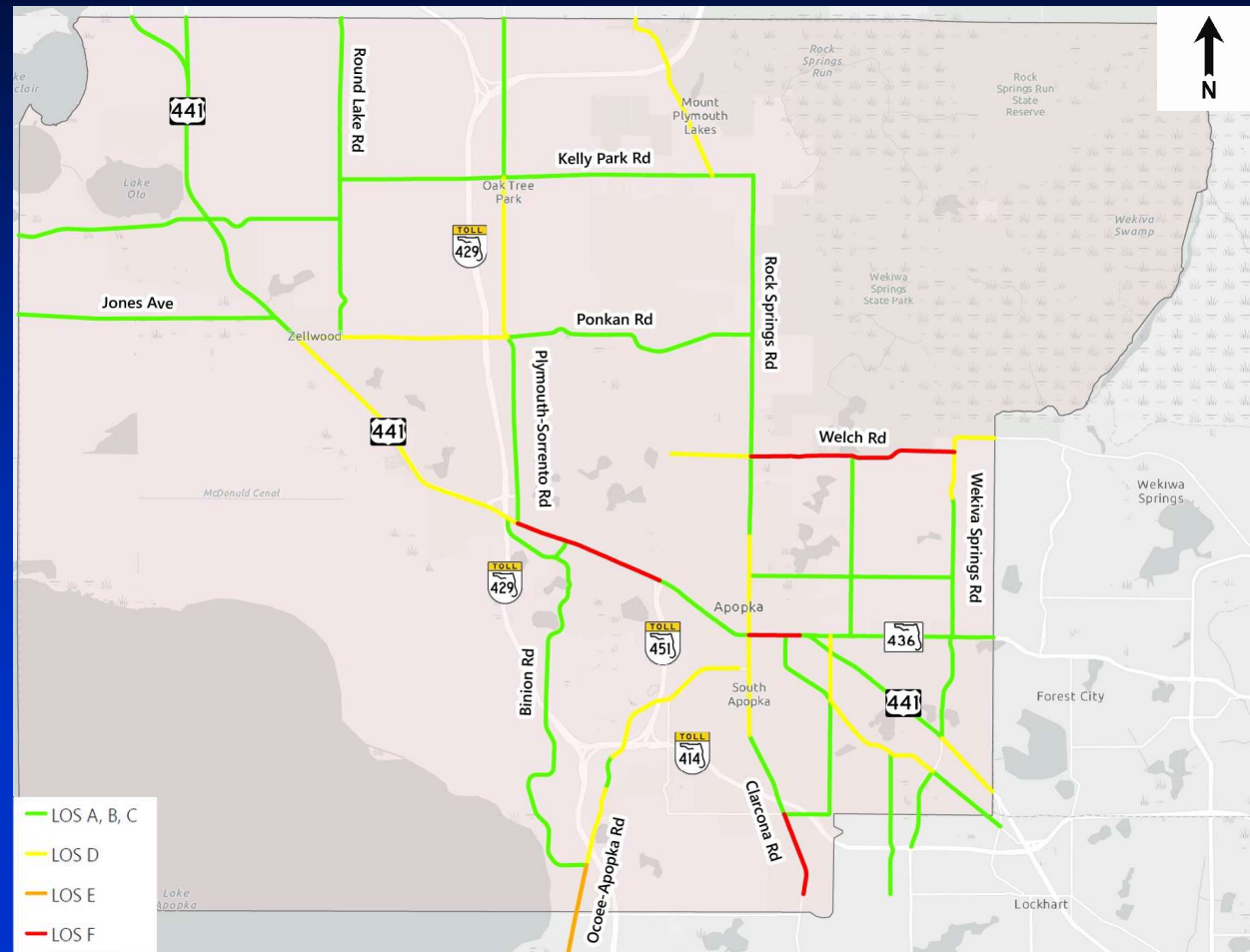




Existing Conditions Evaluation

Roadway Segment Operations

- LOS A through C – 69%
- LOS D – 22%
- LOS E – 2%
- LOS F – 8%
- Failing Roadway Segments:
 - Welch Rd from Rock Springs Rd to Wekiwa Springs Rd – LOS F
 - Ocoee Apopka Rd from West Road / Ocoee Crown Pointe Pkwy to Binion Road – LOS E
 - US 441 from SR 436 to Park Ave – LOS F
 - US 441 from Western Beltway to Plymouth Sorrento Rd - LOS F
 - Clarcona Rd / Park Ave from Gilliam Rd to Keene Rd – LOS F

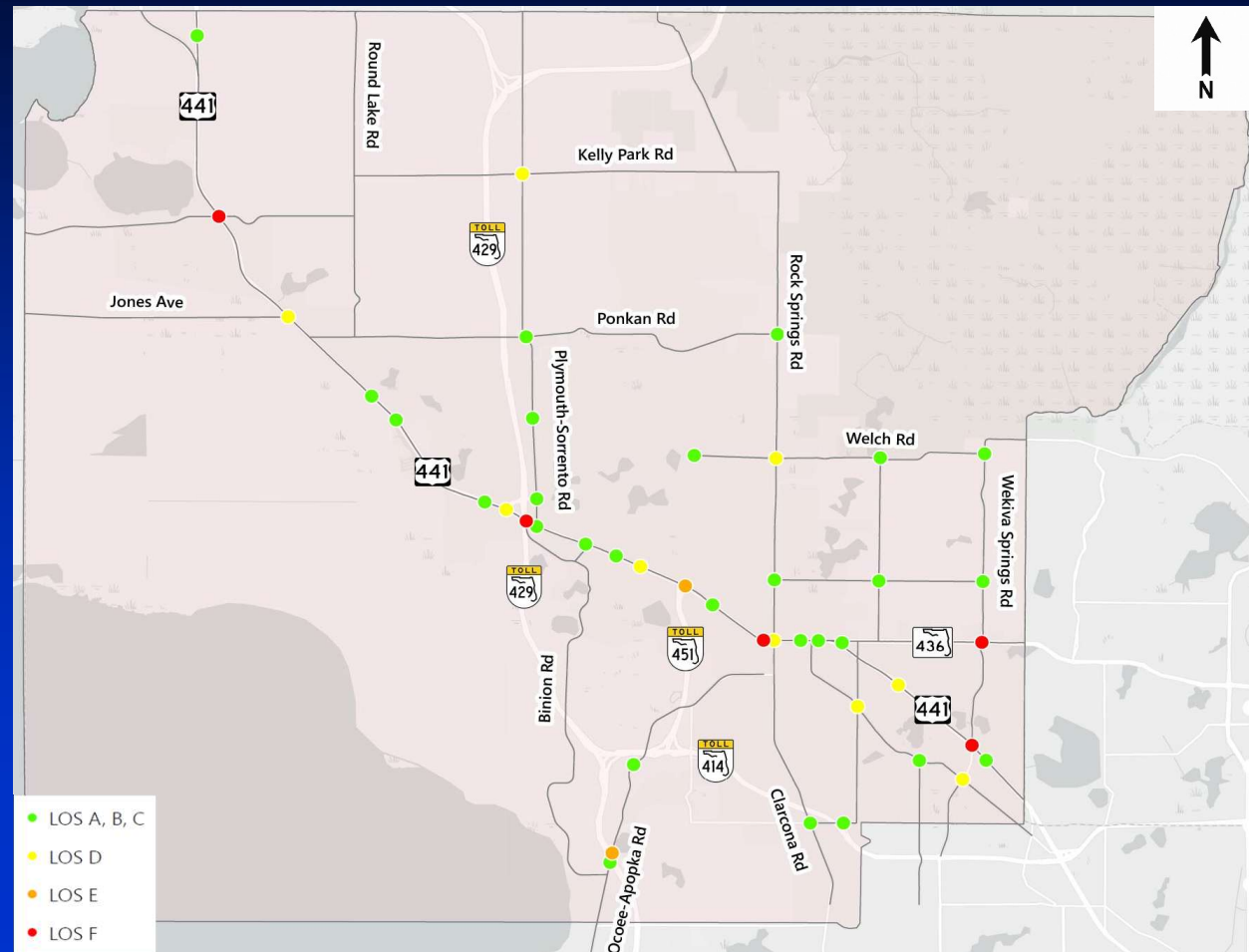




Existing Conditions Evaluation

Intersection Operations

- LOS A through C – 61%
- LOS D – 20%
- LOS E – 7%
- LOS F – 11%
- Failing Intersections:
 - US 441 & Piedmont Wekiwa Rd
 - US 441 & Central Ave
 - US 441 & W Orange Ave
 - US 441 & Sadler Rd
 - Piedmont Wekiwa Rd & SR 436

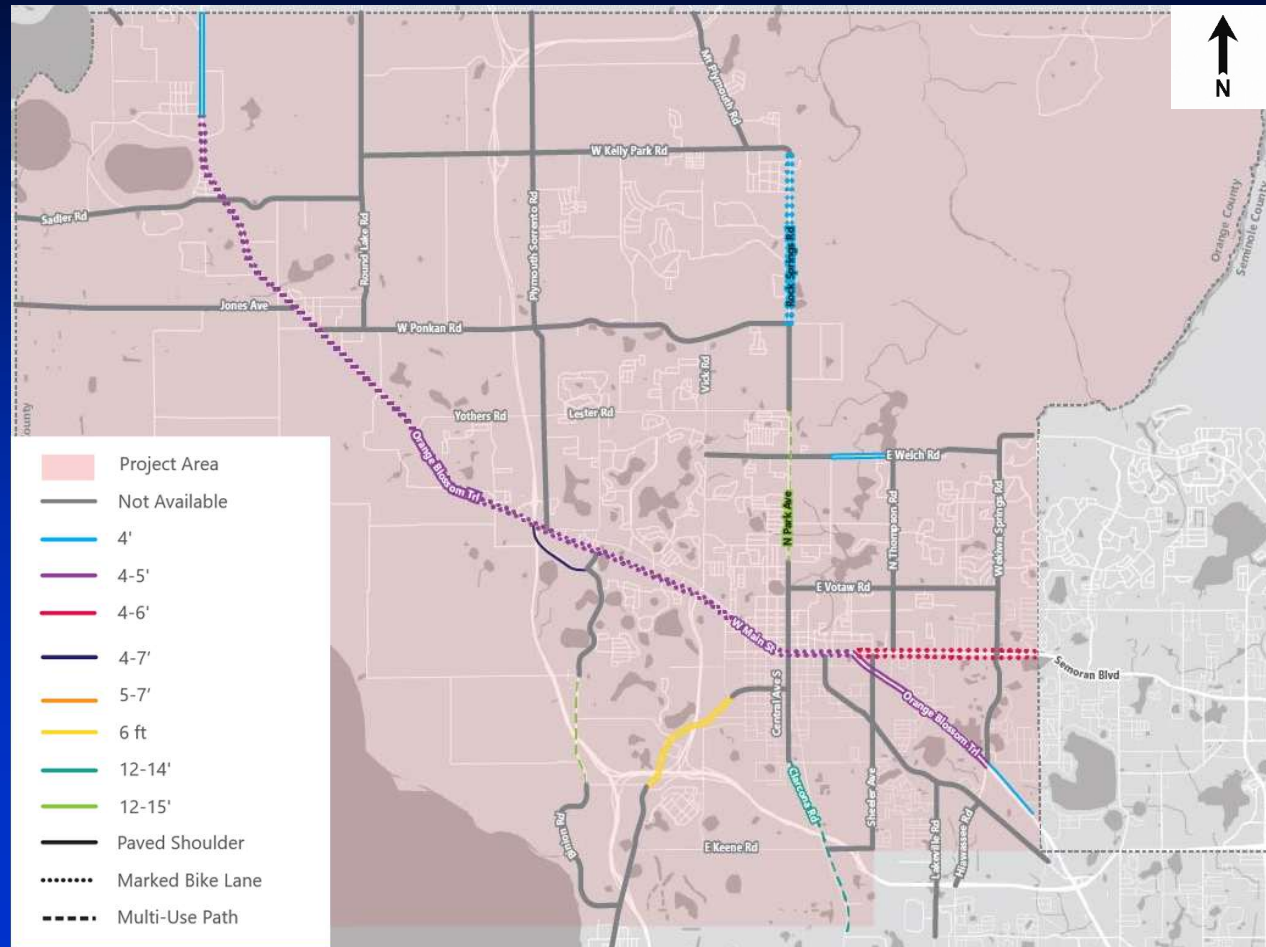




Existing Conditions Evaluation

Three Types of Bicycle Facilities

- Bicycle Lanes
- Paved Shoulders
- Multi-use Paths
- No Sharrows or Buffered Bike Lanes

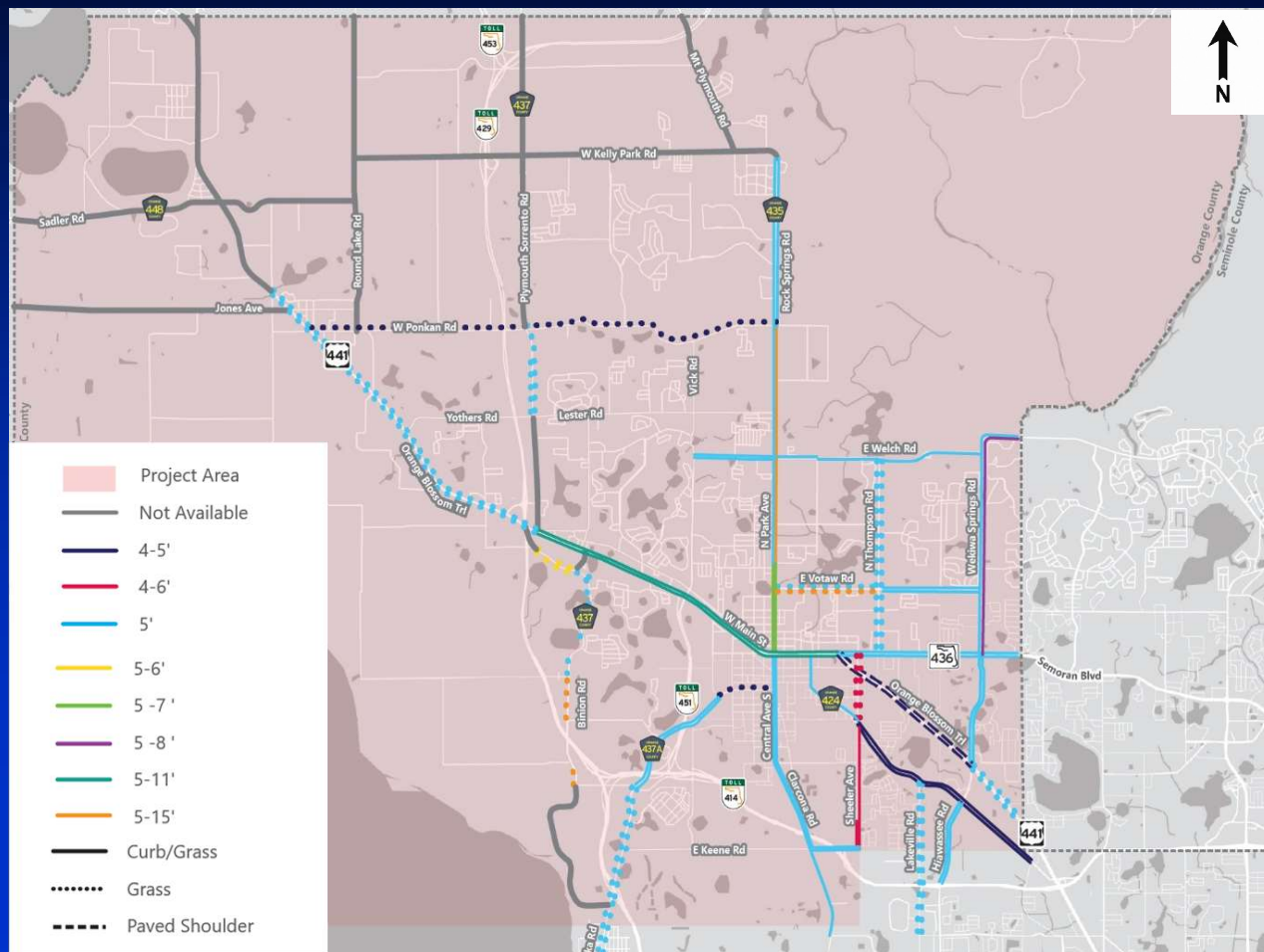




Existing Conditions Evaluation

Pedestrian Facilities

- Primarily Sidewalks
- Curb/Grass
- Paved Shoulder



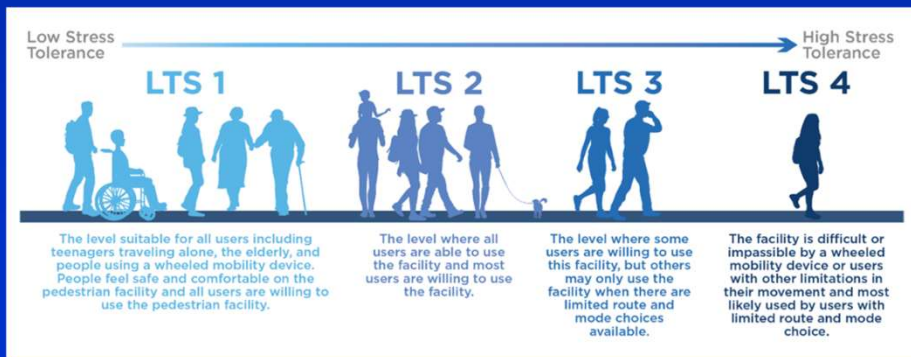


Existing Conditions Evaluation

Pedestrian & Bicycle Level of Traffic Stress (LTS) Analysis

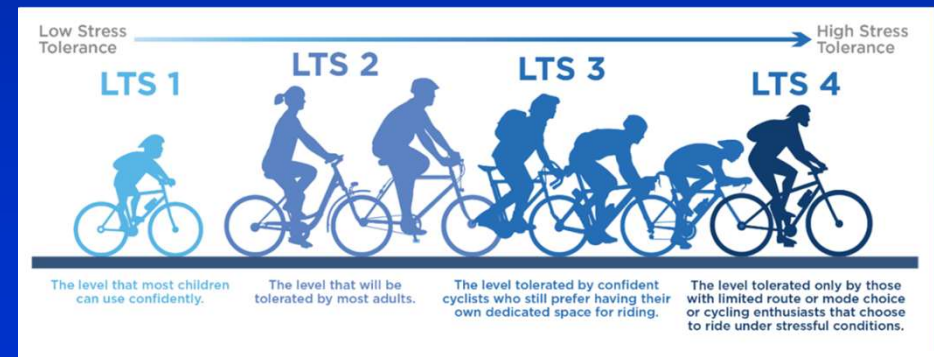
Pedestrian LTS Factors Considered

- Presence of sidewalk
- Posted speed
- Is there a separation



Bicycle LTS Factors Considered

- Presence of bicycle facility
 - Width of bicycle lane
 - Is there a separation
- Posted speed
- AADT

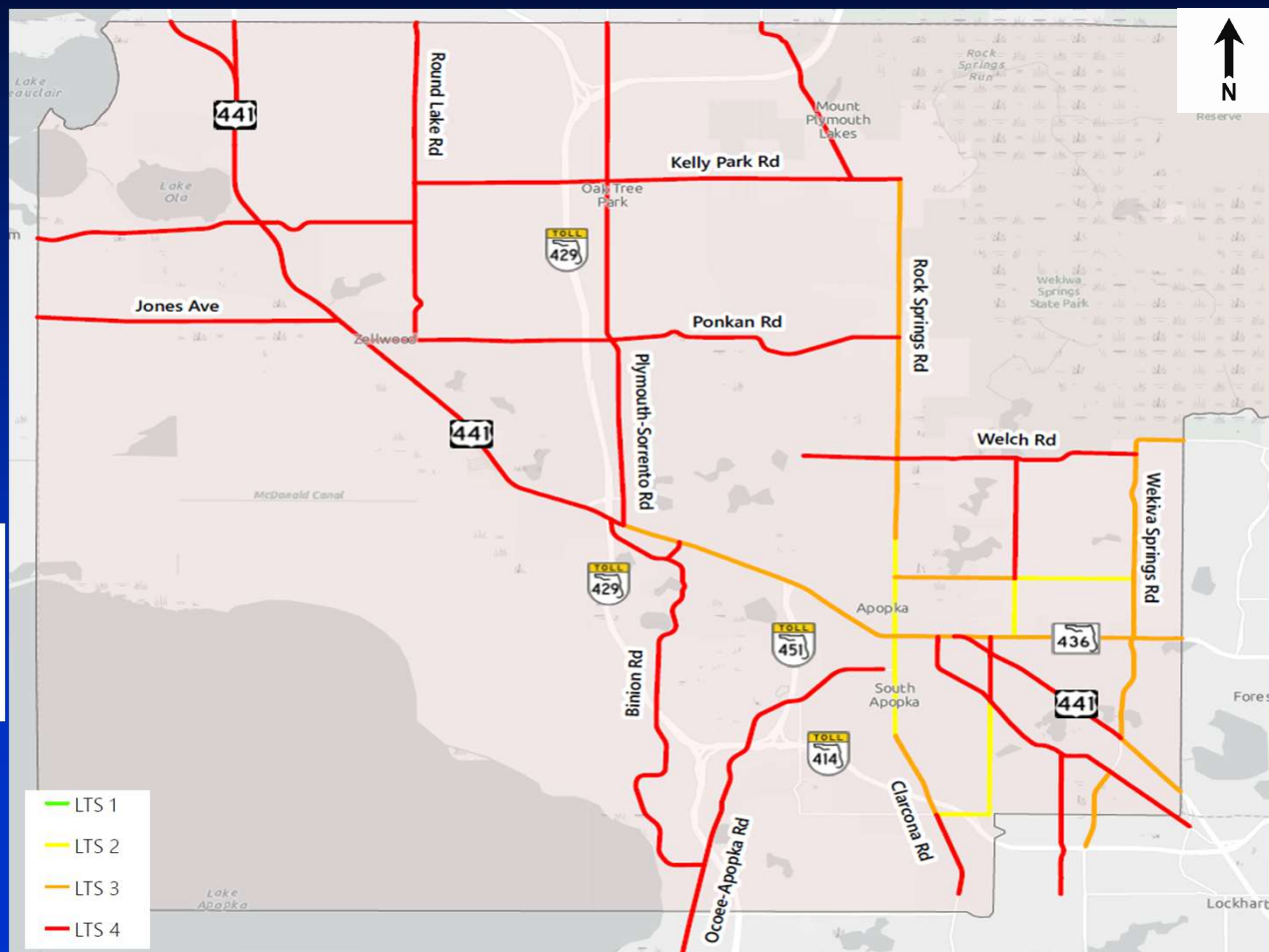




Existing Conditions Evaluation

Pedestrian LTS Analysis

- LTS 1 – 0%
- LTS 2 – 10%
- LTS 3 – 27%
- LTS 4 – 63%

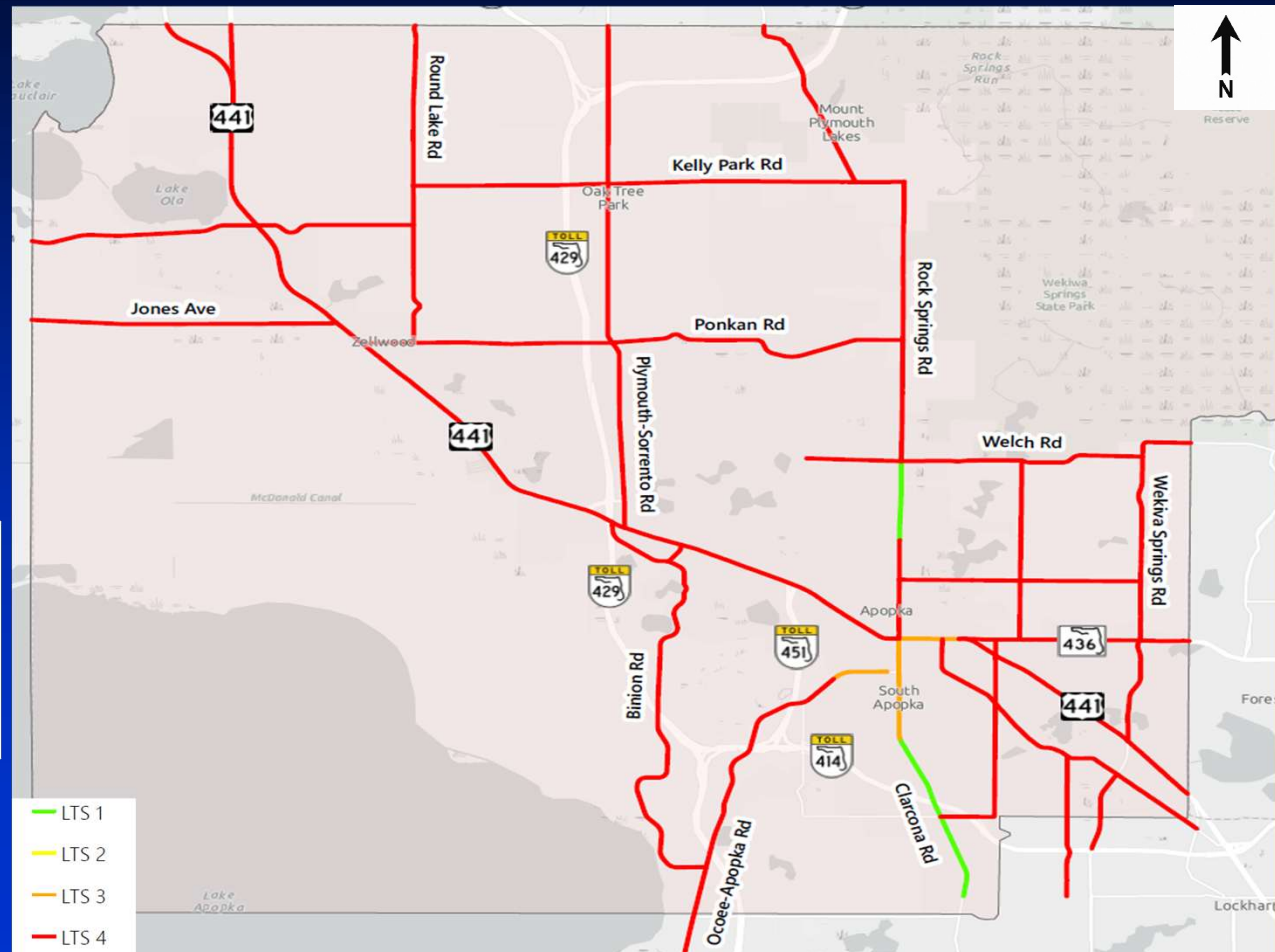
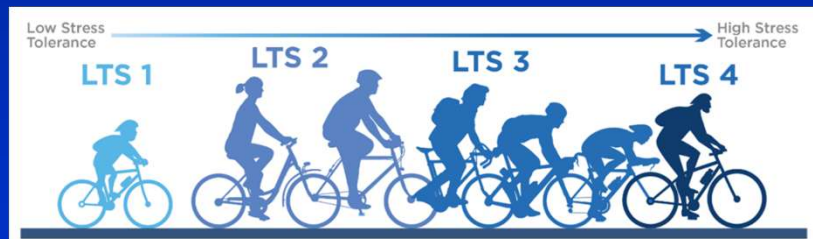




Existing Conditions Evaluation

Bicycle Level of Traffic Stress (LTS) Analysis

- LTS 1 – 5%
- LTS 2 – 0%
- LTS 3 – 5%
- LTS 4 – 90%

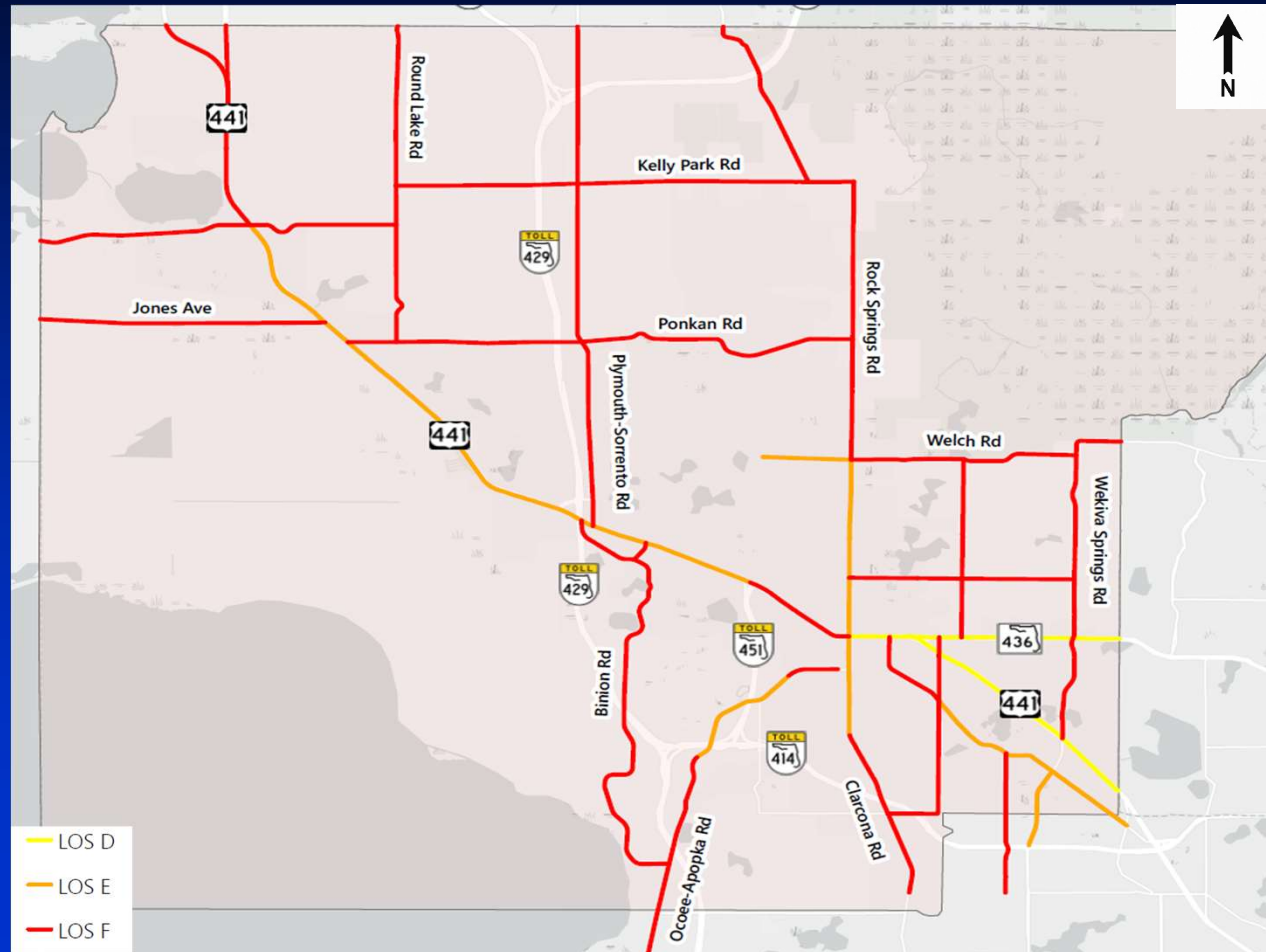




Existing Conditions Evaluation

Transit LOS Analysis

- Majority of study segments have either LOS E or F due to:
 - Lack of bus routes and
 - Low service frequency





Existing Conditions Evaluation

Transit Route Characteristics

■ Route 44

- Total FY 2024 Ridership: 140,493
- Frequency – 60 minutes

■ Route 106

- Total FY 2024 Ridership: 434,914
- Frequency – 30 minutes

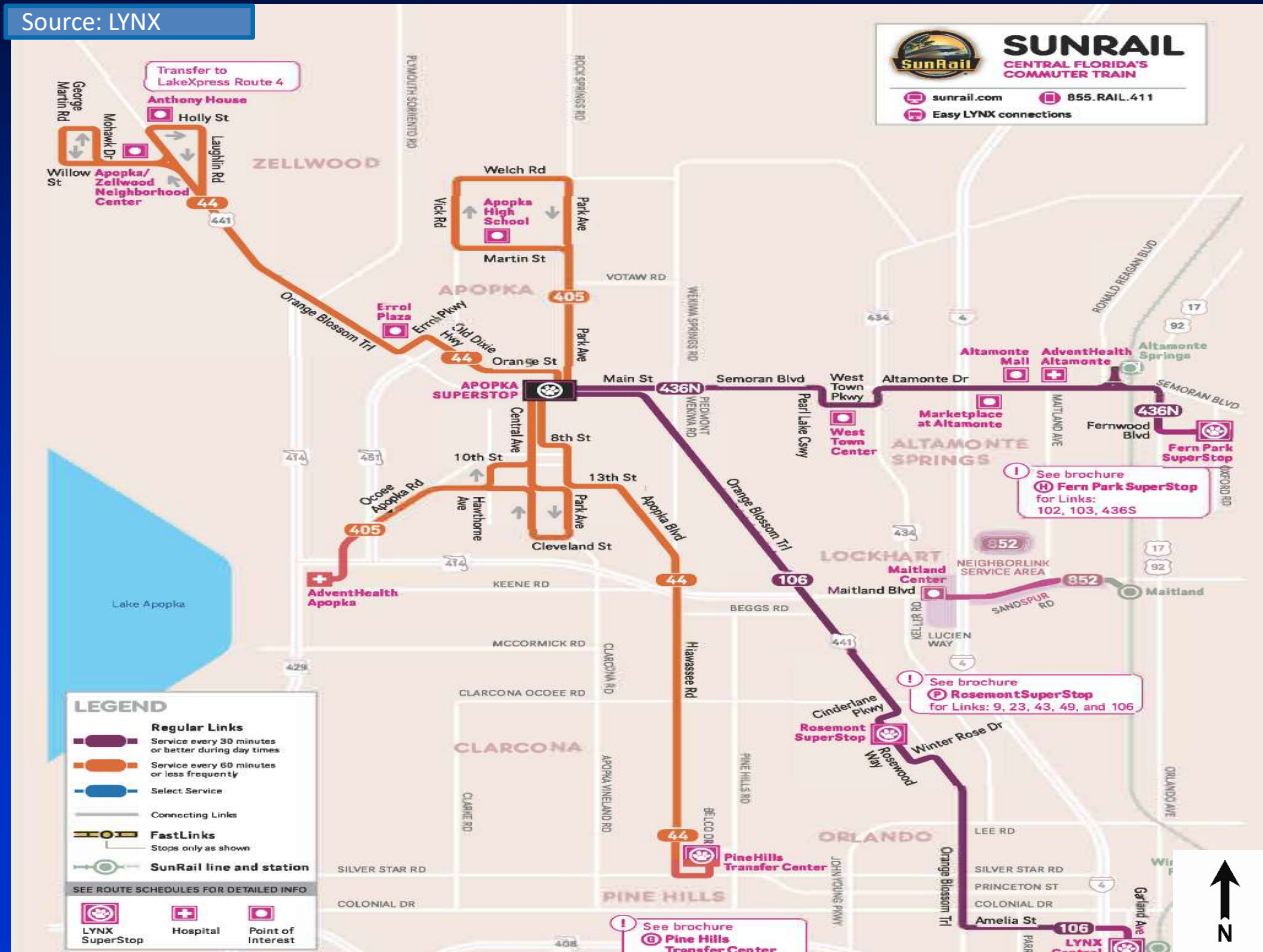
■ Route 405

- Total FY 2024 Ridership: 51,535
- Frequency – 60 minutes

■ Route 436N

- Total FY 2024 Ridership: 324,572
- Frequency – 30 minutes

Source: LYNX

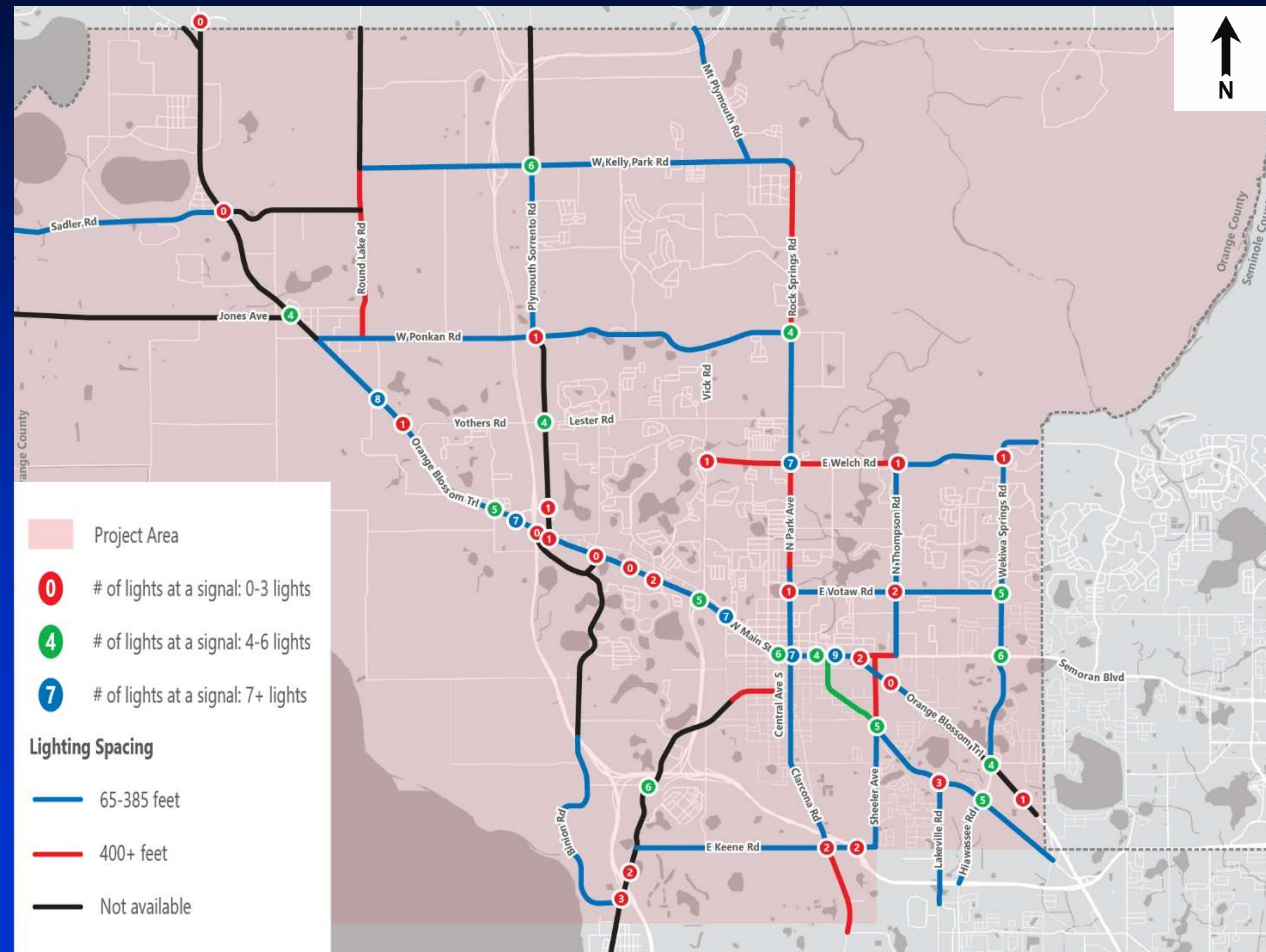




Existing Conditions Evaluation

Lighting Conditions

- Based on desktop review
 - Lighting spacing along segments
 - Number of lights at Intersections
 - Majority 0-3 lights

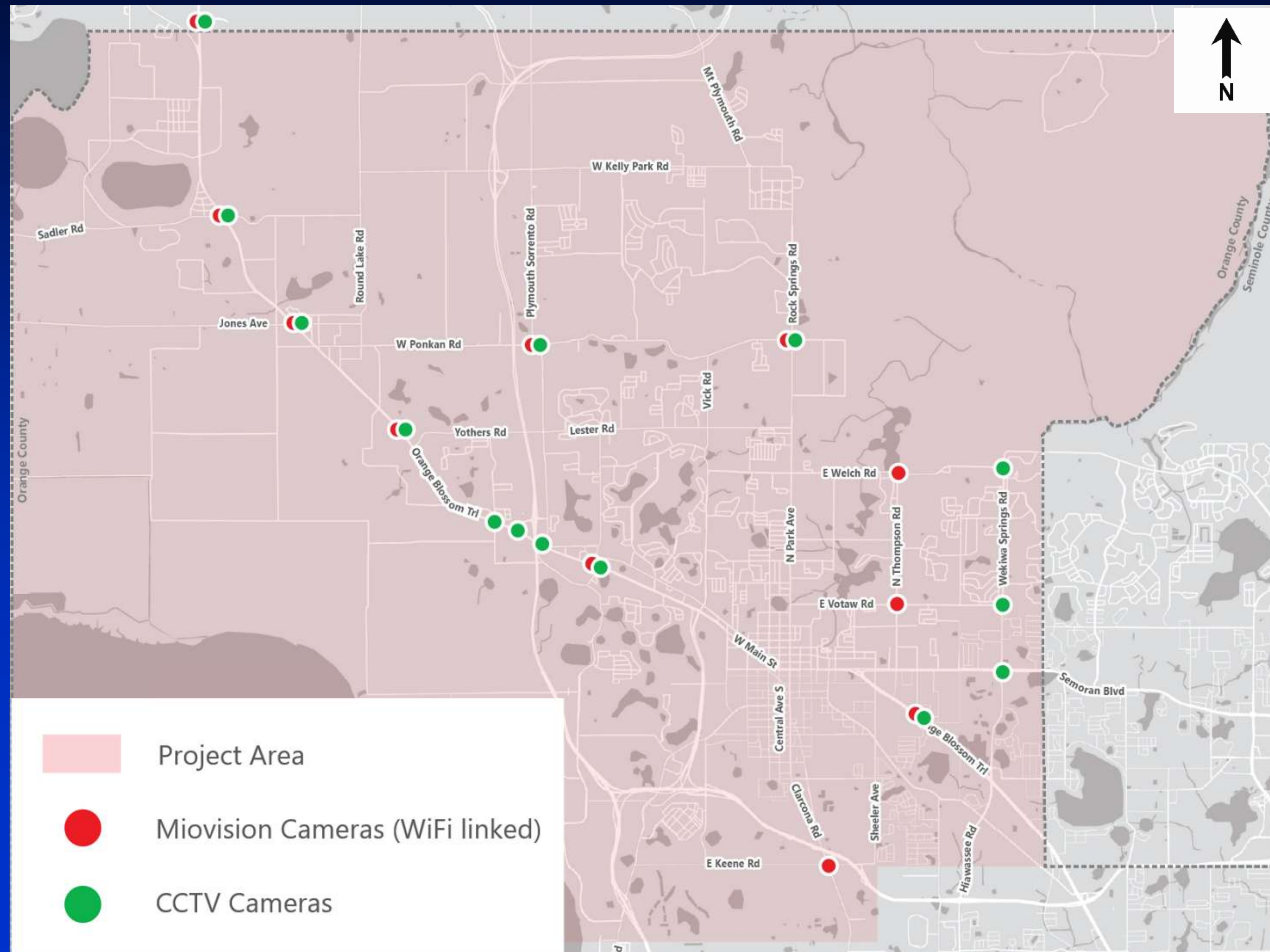




Existing Conditions Evaluation

ITS Features

- Traffic signals - Regional Traffic Management Center
- Most ITS-enabled signals use Miovision cellular connections for communication
- Fiber coverage exists mainly along key north-south corridors.

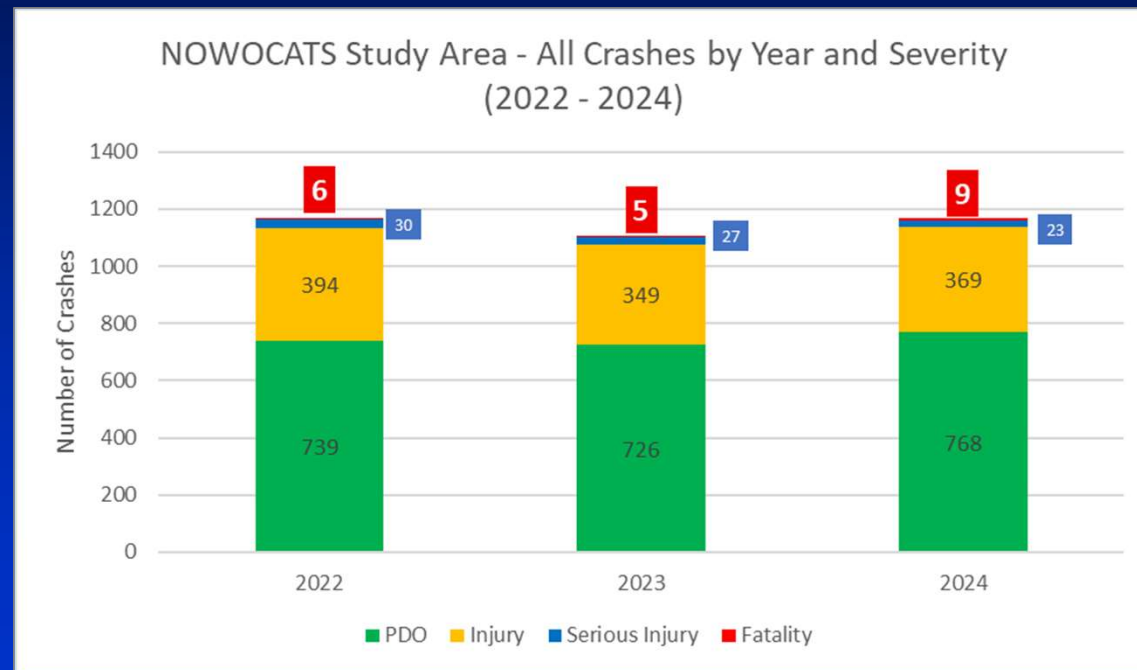




Existing Conditions Evaluation

Historic Crash Analysis (2022-2024)

- Total Crashes (roadways + intersections)
 - 3,445
 - 20 Fatalities
 - 1,192 Injury Crashes
 - 2,233 Property Damage
 - Major Types – Rear End, Left Turn, Sideswipe, and Angle
- Intersections – 770 (22.4%)
- Mid-segments – 2,675 (77.6%)

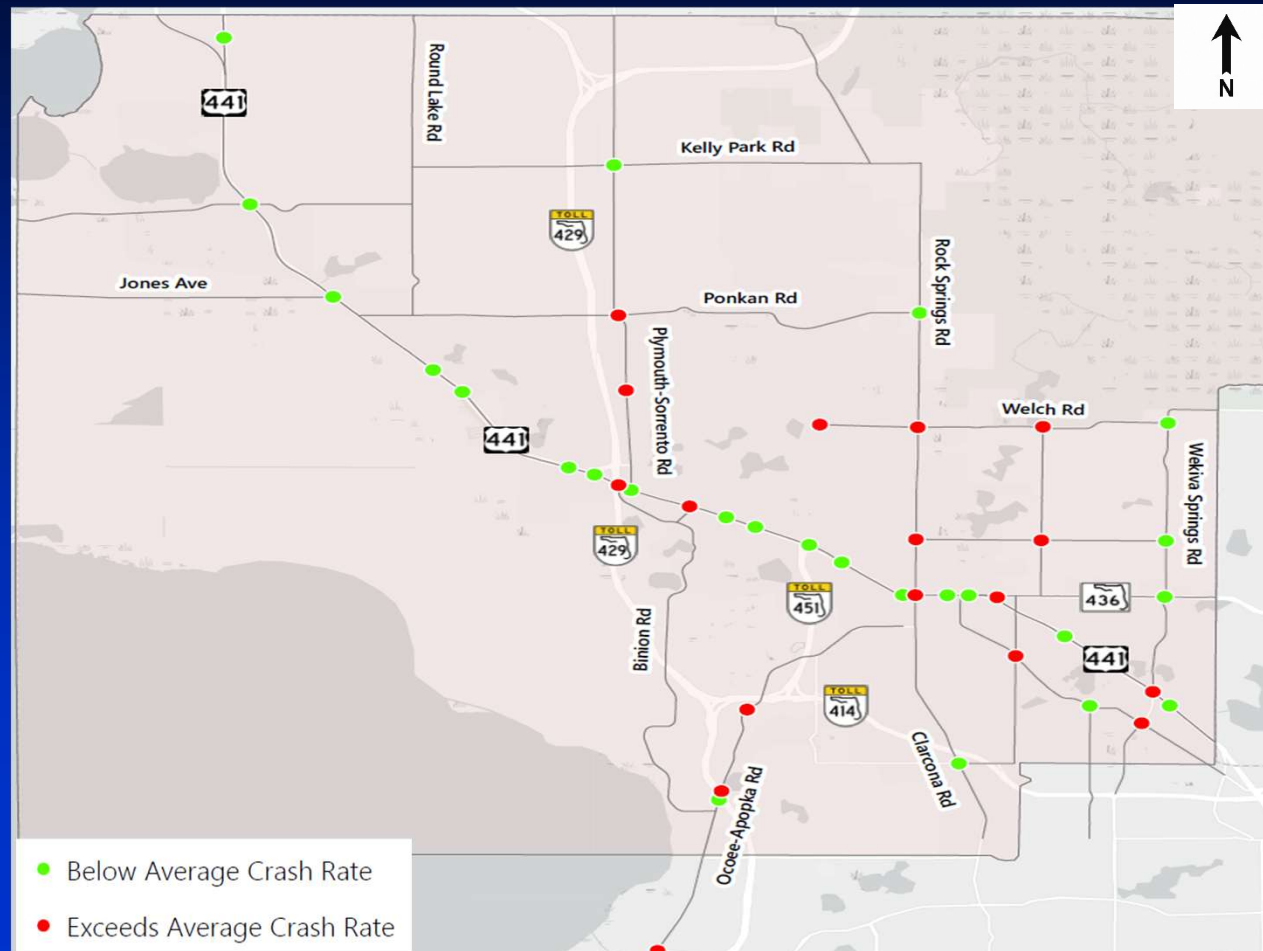




Existing Conditions Evaluation

Intersection Crash Hot Spots

- Below Average Crash Rate – 57%
- Above Average Crash Rate – 43%

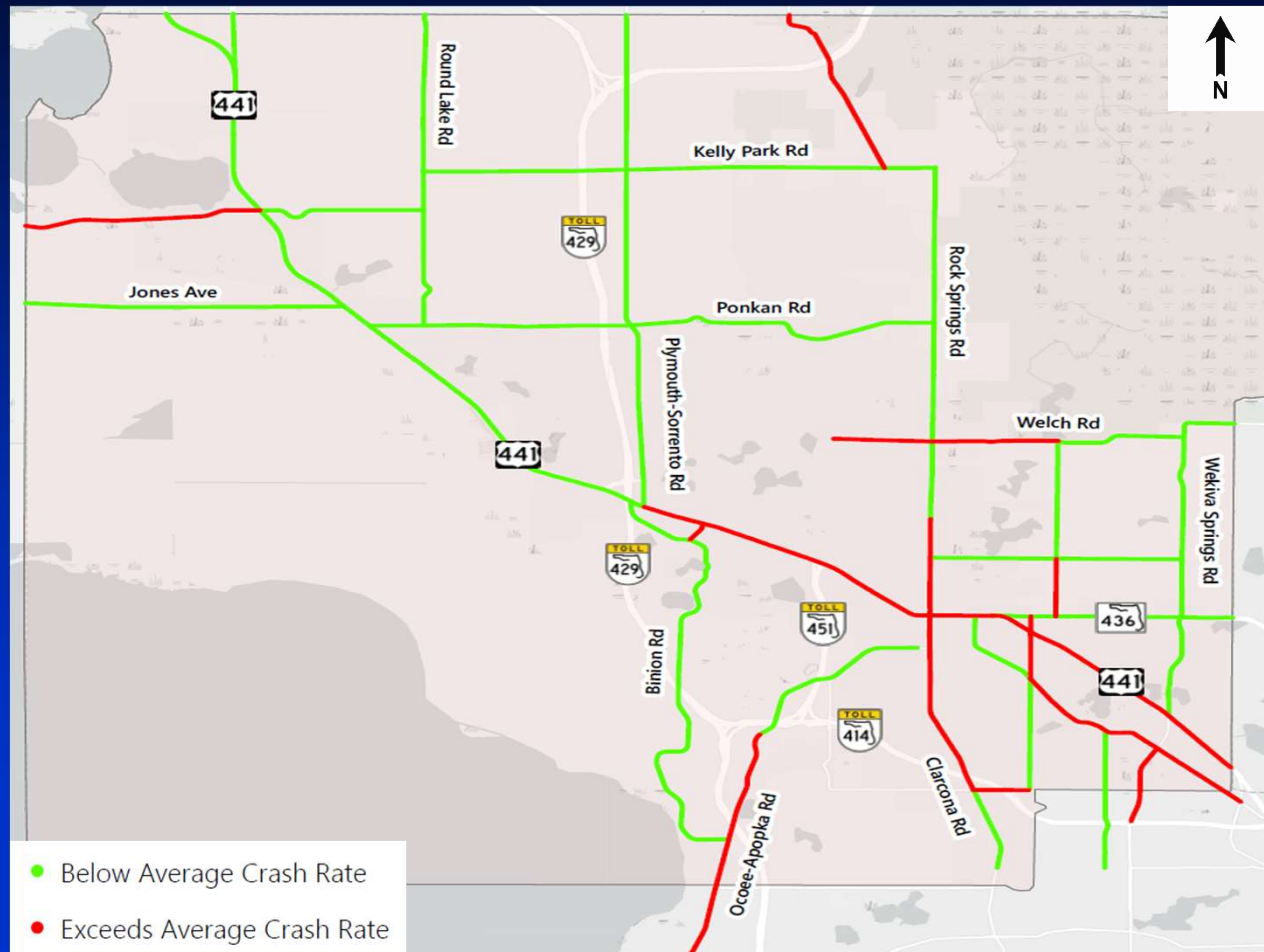




Existing Conditions Evaluation

Roadway Segment Crash Hot Spots

- Below Average Crash Rate – 63%
- Above Average Crash Rate – 37%



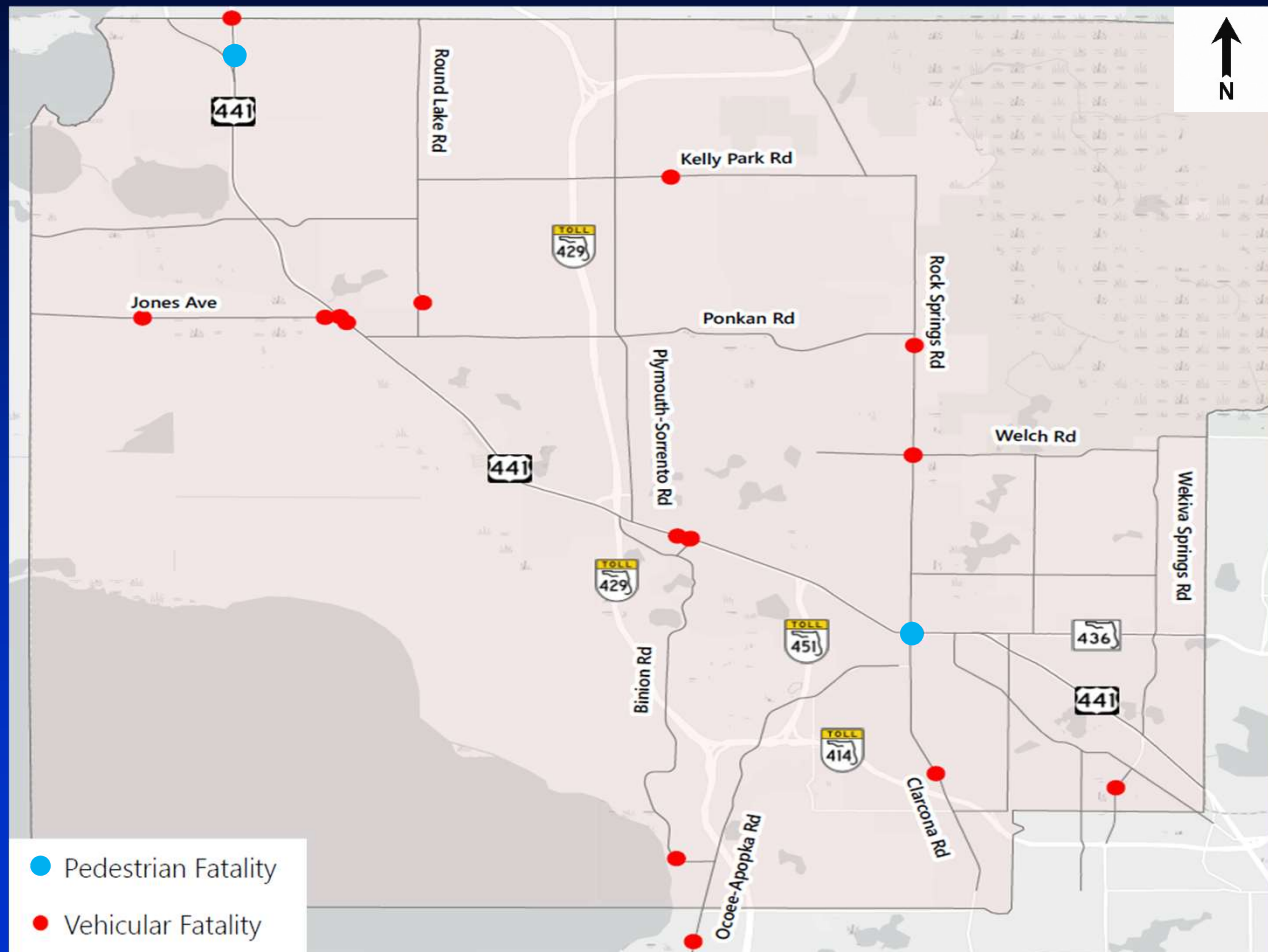


Existing Conditions Evaluation

Fatal Crashes - 20

- Vehicular – 18 (90%)
- Pedestrian – 2 (10%)
- Leading crash types
 - Off Road, Head On and Left Turn
- 85% in low-light conditions (dark, dusk and dawn)

***Additional Pedestrian Fatal Crashes – 6 in 2021 and 1 in 2025**





Presentation Outline

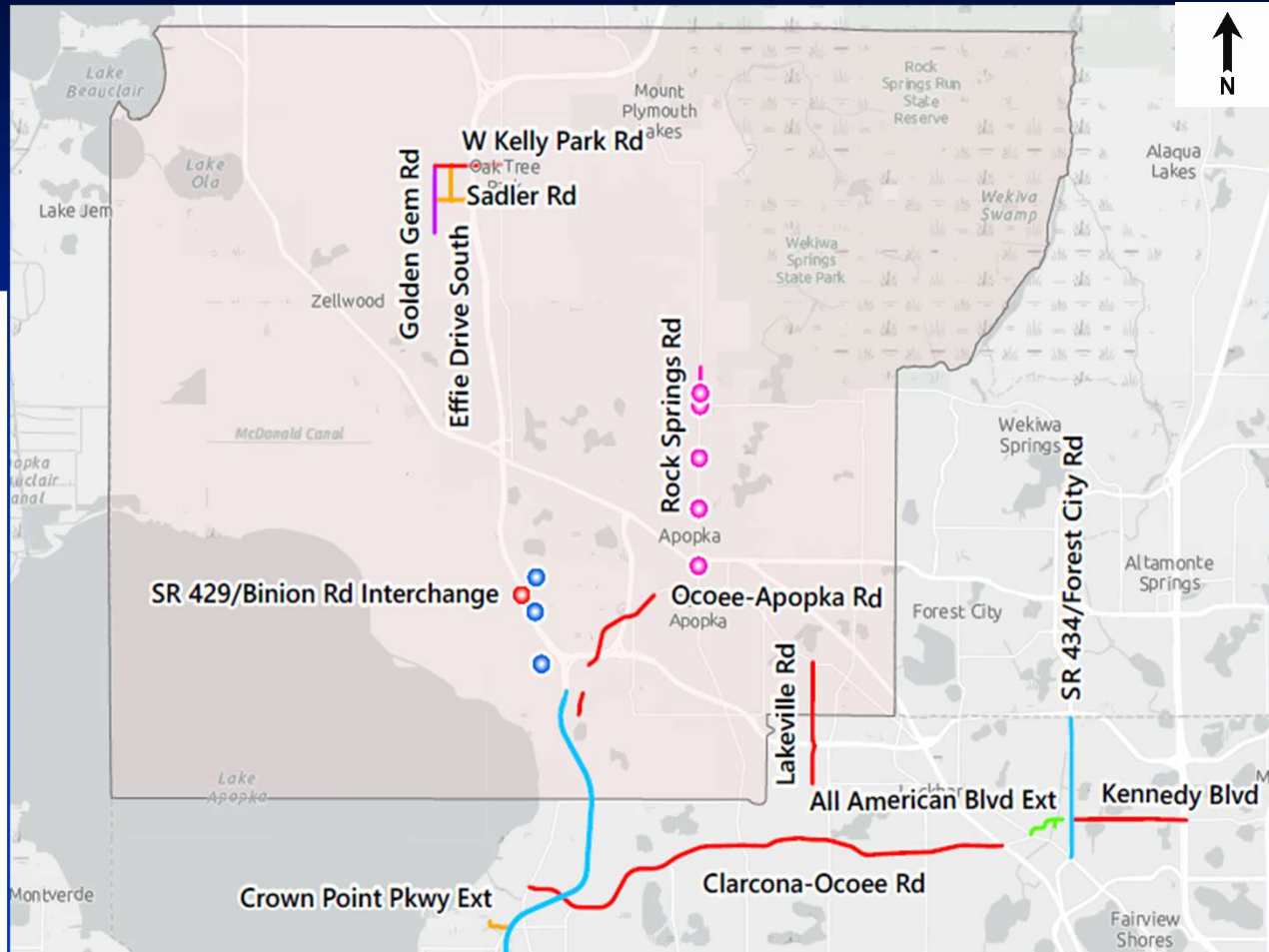
- Welcome and Opening Remarks
- Study Purpose and Objectives
- Existing Conditions Evaluation
- **Programmed and Planned Improvements**
- Future Conditions Evaluation
- Study Timeline
- Public Engagement



Programmed and Planned Improvements

Programmed Improvements




- New 2 lane Extension
- New 4 lane Extension
- New Interchange
- Widen to 3 lanes
- Widen to 4 lanes
- Widen to 6 lanes
- Complete Streets
- Intersection Improvement
- New Roundabout
- New Interchange

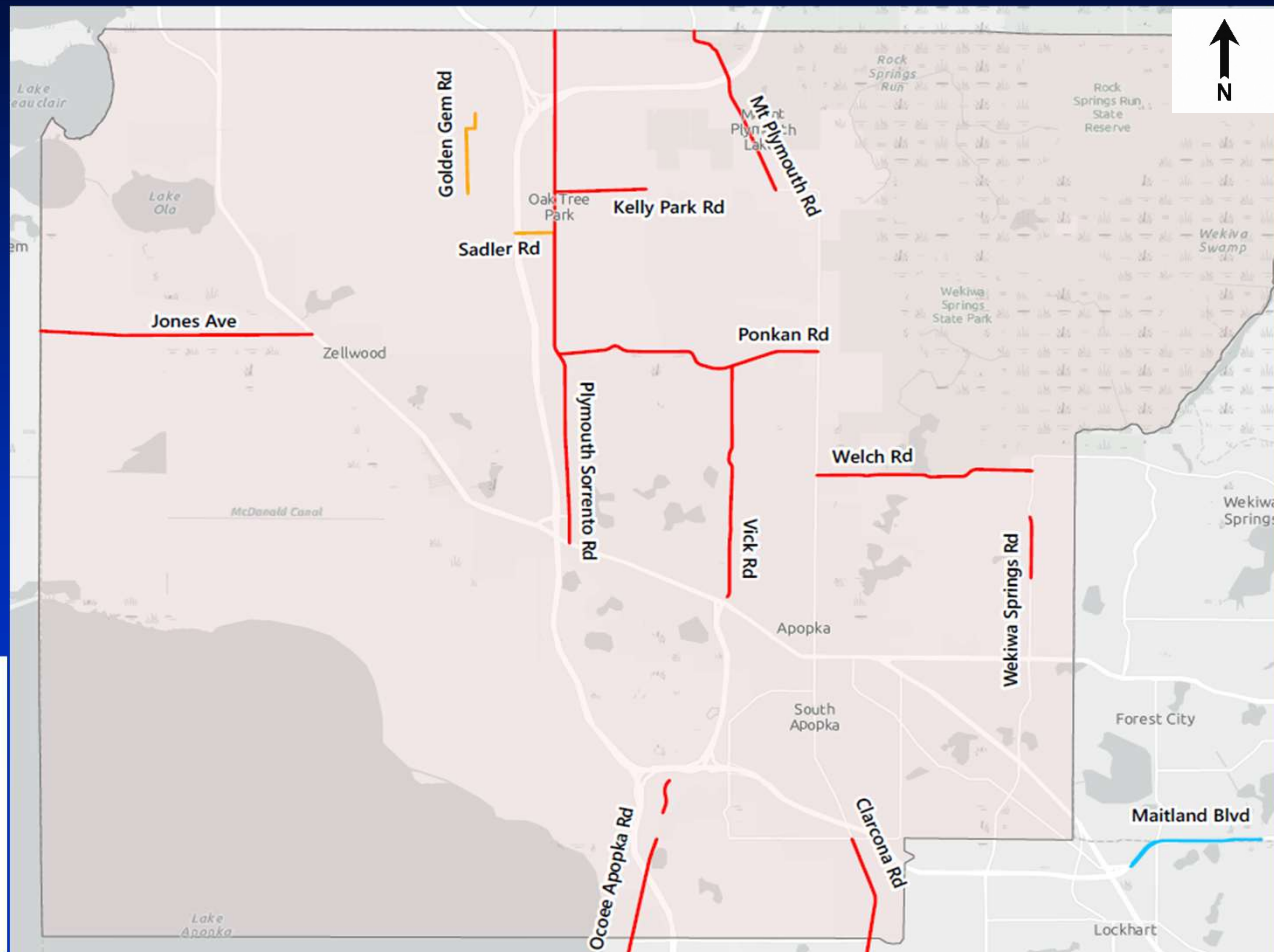




Programmed and Planned Improvements

Planned Improvements

-  New 2 lane Extension
-  Widen to 4 lanes
-  Widen to 6 lanes





Presentation Outline

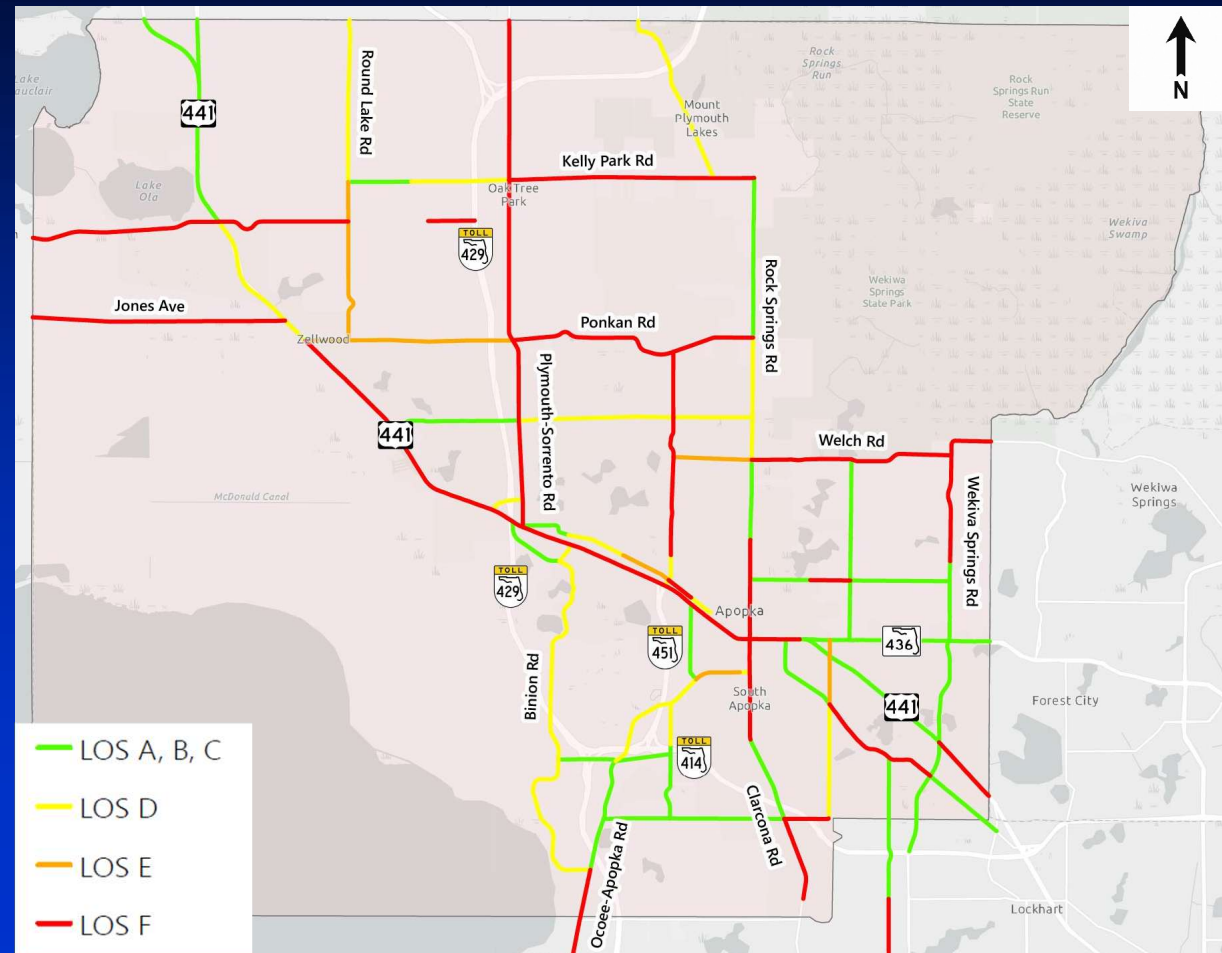
- Welcome and Opening Remarks
- Study Purpose and Objectives
- Existing Conditions Evaluation
- Programmed and Planned Improvements
- **Future Conditions Evaluation**
- Study Timeline
- Public Comment



Future Conditions Evaluation

2050 No Build (Based on Programmed Improvements) Roadway Segment Operations

- LOS A through C – 36%
- LOS D – 17%
- LOS E – 6%
- LOS F – 41%

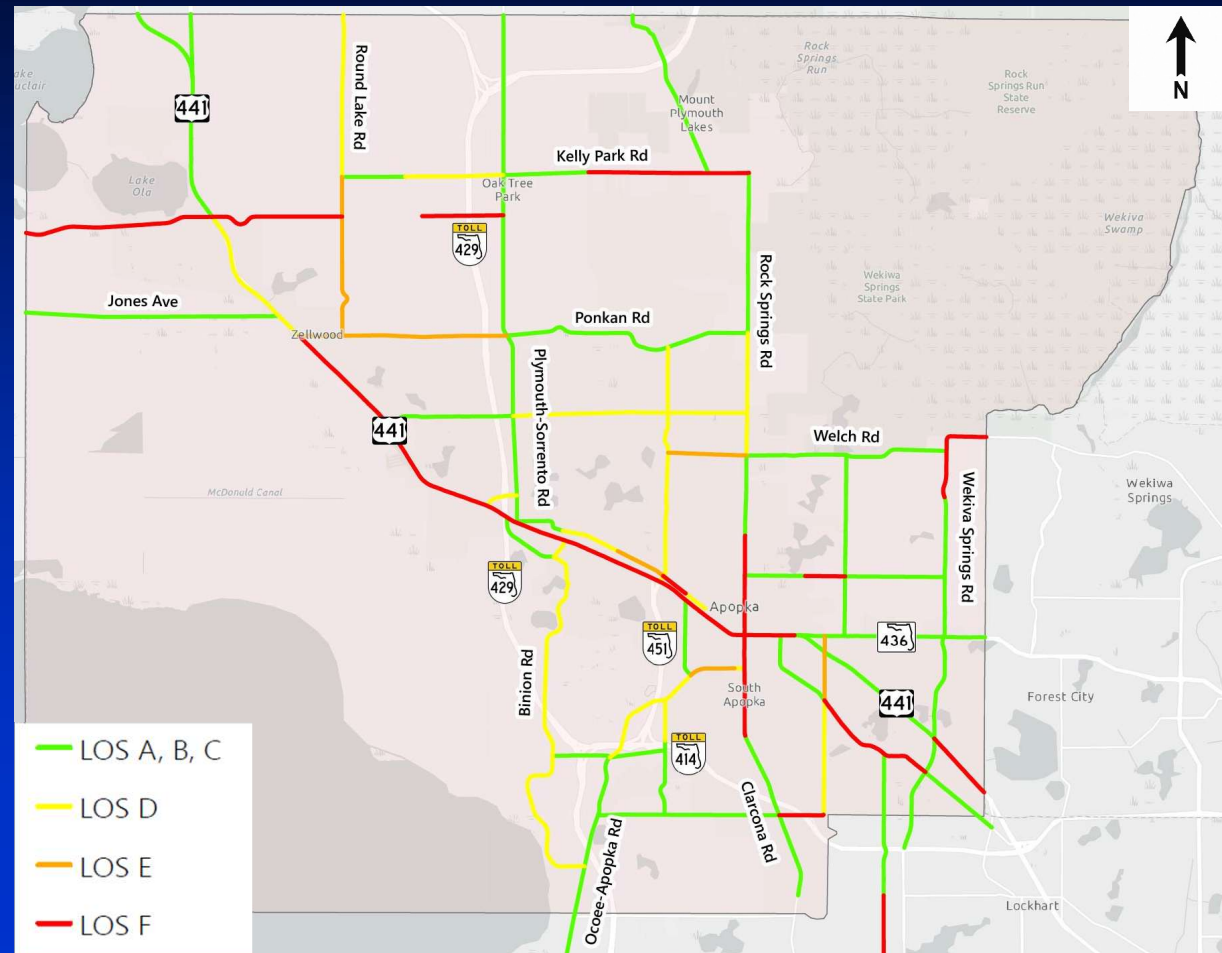




Future Conditions Evaluation

2050 Build (Based on Programmed and Planned Improvements) Roadway Segment Operations

- LOS A through C – 55%
- LOS D – 16%
- LOS E – 7%
- LOS F – 22%





Future Conditions Evaluation

Future Year Needs Plan

- Develop & prioritize short-term, mid-term, and long-term improvements:
 - Short-term – 2030
 - Low-cost improvements; TSM&O
 - Mid-term – 2040
 - May need additional funding
 - Can be constructed within 10-15 years
 - Long-term – 2050
 - Major improvements
 - > 20 years

Short-term

- Signal Retiming
- Safety Improvements
- New Signals
- Lighting Upgrades
- Low-cost multimodal improvements
- Turn lane extensions

Mid-term

- Multimodal Improvements / Complete Streets
- Capacity Improvements
- Access Management
- ITS

Long-term

- Innovative Intersections
- Bus Rapid Transit
- New Roadways
- Transportation Demand Management
- AV / CV Scenarios



Presentation Outline

- Welcome and Opening Remarks
- Study Purpose and Objectives
- Existing Conditions Evaluation
- Programmed and Planned Improvements
- Future Conditions Evaluation
- **Study Timeline**
- Public Engagement



Study Timeline

Project Schedule

	2025			2026						
	Apr – Jun	Jul – Sep	Oct – Dec	Jan	Feb	Mar	Apr	May	Jun	Jul
Project Kick-Off	●									
Community Meetings				●		●				
Local Planning Agency (LPA)/Board of County Commissioners (BCC) Workshops & Public Hearings								●	●	
Data Collection & Analysis										
Transportation Modeling										
Evaluation of Scenarios & Needs Plan										
Environmental Analysis										
Final Report & Project Wrap Up										



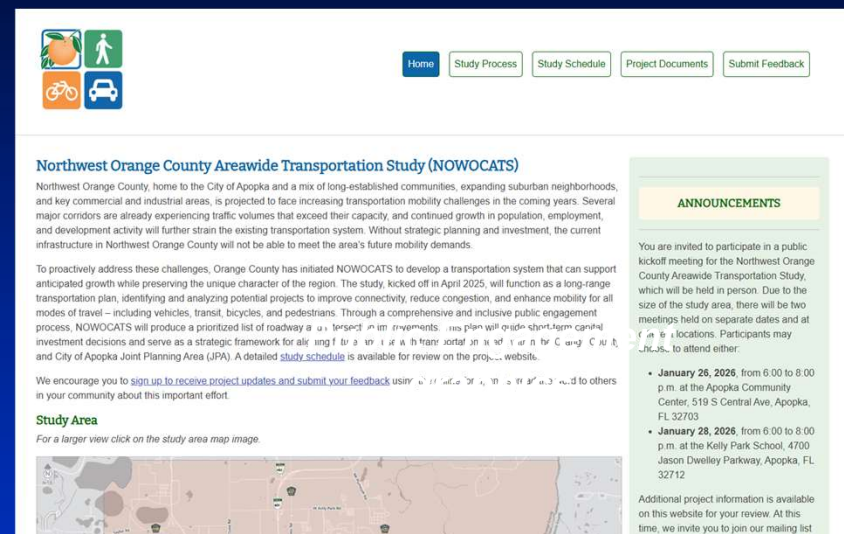
Presentation Outline

- Welcome and Opening Remarks
- Study Purpose and Objectives
- Existing Conditions Evaluation
- Programmed and Planned Improvements
- Future Conditions Evaluation
- Study Timeline
- **Public Engagement**

Public Engagement

Public Engagement Opportunities

- Community Meetings
- Project Website www.nowocats.com
- Call/Email
- Attend LPA & BCC Hearings



Northwest Orange County Areawide Transportation Study (NOWOCATS)

Northwest Orange County, home to the City of Apopka and a mix of long-established communities, expanding suburban neighborhoods, and key commercial and industrial areas, is projected to face increasing transportation mobility challenges in the coming years. Several major corridors are already experiencing traffic volumes that exceed their capacity, and continued growth in population, employment, and development activity will further strain the existing transportation system. Without strategic planning and investment, the current infrastructure in Northwest Orange County will not be able to meet the area's future mobility demands.

To proactively address these challenges, Orange County has initiated NOWOCATS to develop a transportation system that can support anticipated growth while preserving the unique character of the region. The study, kicked off in April 2025, will function as a long-range transportation plan, identifying and analyzing potential projects to improve connectivity, reduce congestion, and enhance mobility for all modes of travel – including vehicles, transit, bicycles, and pedestrians. Through a comprehensive and inclusive public engagement process, NOWOCATS will produce a prioritized list of roadway and transit investments. This plan will guide short-term capital investment decisions and serve as a strategic framework for air quality and transportation planning for the City of Apopka, the City of Orange, and City of Apopka Joint Planning Area (JPA). A detailed [study schedule](#) is available for review on the project website.

We encourage you to [sign up to receive project updates](#) and [submit your feedback](#) using the links on the project website.

Study Area
For a larger view click on the study area map image.

ANNOUNCEMENTS

You are invited to participate in a public kickoff meeting for the Northwest Orange County Areawide Transportation Study, which will be held in person. Due to the size of the study area, there will be two meetings held on separate dates and at two locations. Participants may choose to attend either:

- **January 26, 2025**, from 6:00 to 8:00 p.m. at the Apopka Community Center, 519 S Central Ave, Apopka, FL 32703
- **January 28, 2025**, from 6:00 to 8:00 p.m. at the Kelly Park School, 4700 Jason Dwellley Parkway, Apopka, FL 32712

Additional project information is available on this website for your review. At this time, we invite you to join our mailing list.





Public Engagement

Orange County Project

Contact:

Hatem A. Abou-Senna, PhD., P.E.

Project Manager

Transportation Planning Division
Orange County Public Works Department
4200 John Young Parkway
Orlando, FL 32839
Email: Hatem.Abou-Senna@ocfl.net
Phone: (407) 836-8023
Fax: (407) 836-8079



Call, Email, or Visit Website
www.NOWOCATS.com



Consultant Project

Contact:

Babuji Ambikapathy, P.E., AICP

VHB

225 E. Robinson Street, Suite 300
Landmark Center Two
Orlando, FL 32801
Email: BAmbikapathy@VHB.com
Phone: (407) 459-1630



Public Engagement

**QUESTIONS AND
ANSWERS**